

StartClim2009

Adaptation to Climate Change: Contributions for the development of a policy paper for adaptation to climate change in Austria

Final Report

November 2010



lebensministerium.at

BM.W.F^a

bm w fi
Bundesministerium für
Wirtschaft, Familie und Jugend

Die Österreichische
Hagelversicherung **HV**

 **ÖBf**

g BUNDESMINISTERIUM
FÜR GESUNDHEIT

 **Verbund**
Austrian Hydro Power

ÖNB
ÖSTERREICHISCHE
NATIONALBANK

umweltbundesamt^U

StartClim2009

Adaptation to climate change in Austria: contributions to the development of a policy paper for adaptation to climate change in Austria

Final Report

Project Leader

Institute of Meteorology
Department of Water, Atmosphere and Environment
BOKU - University of Natural Resources and Life Sciences Vienna
Univ.-Prof. Dr. Helga Kromp-Kolb

Contracting Parties

Austrian Federal Ministry of Agriculture, Forestry, Environment and Water Management
Austrian Federal Ministry of Health
Austrian Federal Ministry of Economic Affairs, Family and Youth
Austrian Federal Ministry of Science and Research
Austrian Federal Forests
Austrian National Bank
Austrian Hail Insurance
Federal Environment Agency
Verbund AHP

Administrative Coordination

Federal Environment Agency

Vienna, November 2010

StartClim2009

Adaptation to climate change in Austria: contributions to the development of a policy paper for adaptation to climate change in Austria

Project Leader: Institute of Meteorology
Department of Water, Atmosphere and Environment
BOKU – University of Natural Resources and Life Sciences, Vienna
Peter Jordan Strasse 82, 1190 Vienna
URL: <http://www.austroclim.at/startclim/>
<http://www.wau.boku.ac.at/met.html>

Editors

Helga Kromp-Kolb and Ingeborg Schwarzl
Institute of Meteorology
Department of Water, Atmosphere and Environment
BOKU – University of Natural Resources and Life Sciences

Vienna, November 2010

Contributions to StartClim

StartClim2009.A: Vegetation change according to different climate and management conditions in Austrian mountain grassland – a case study on Styrian mountain grasslands

Institute of Botany, BOKU: Gabriele Bassler, Gerhard Karrer,
Institute of Meteorology, BOKU: Herbert Formayer
LFZ-Raumberg-Gumpenstein: Andreas Schaumberger, Andreas Bohner,
Walter Starz
Bio Ernte Steiermark: Wolfgang Angeringer

StartClim2009.B: Climate-growth response of Norway spruce provenances in the Alpine region – an opportunity for adaption of the Austrian forestry

Federal Research and Training Centre for Forests, Natural Hazards and
Landscape: Silvio Schüller, Stefan Kapeller,
Central Institute of Meteorology and Geodynamics: Johann Hiebl

StartClim2009.C: Analysis of vulnerability and adaptation to climate change in the Wienerwald biosphere reserve

Institute of Silviculture, BOKU: Stefan Schörghuber, Werner Rammer,
Rupert Seidl, Manfred J. Lexer

StartClim2009.D: Humus assays as a practical tool for farmers to support carbon sequestration in agriculture

Bio Forschung Austria: Wilfried Hartl, Eva Erhart

StartClim2009.E: Adapting office buildings to climate change: optimisation of thermal comfort

Danube University Krems: Tania Berger, Peter Pundy

StartClim2009.F: AlpinRiskGP - estimation of present and future risk potential for Alpine tourists and infrastructure caused by glacier retreat and permafrost changes in the Grossglockner-Pasterze glacier area (Hohe Tauern, Austria)

Geography and Regional Science, Karl-Franzens-University Graz:
Gerhard Karl Lieb, Katharina Kern, Gernot Seier,
Andreas Kellerer-Pirklbauer-Eulenstein, Ulrich Strasser,

Scientific Coordination

Institute of Meteorology, Department of Water, Atmosphere and Environment
BOKU – University of Natural Resources and Life Sciences, Vienna
Univ. Prof. Dr. Helga Kromp-Kolb, Mag. Ingeborg Schwarzl

Scientific Board

Dr. Gerhard Berz, formerly Münchener Rückversicherung
Dr. Jill Jäger, Sustainable Europe Research Institute (SERI)
Prof. Dr. Hartmut Graßl, Max Planck Institute for Meteorology/University Hamburg

Coordinating Group

Austrian Federal Ministry of Agriculture, Forestry, Environment and Water Management

Elfriede Fuhrmann, Helmut Hojesky, Birgit Kaiserreiner,
Barbara Kronberger-Kießwetter, Florian Rudolf-Miklau, Heinz Stiefelmeyer,
Stefan Vetter, Werner Glantschnig

Austrian Federal Ministry of Health

Ulrich Herzog, Fritz Wagner, Robert Schlögel

Austrian Federal Ministry of Science and Research

Christian Smoliner

Austrian Ministry of Economic Affairs, Family and Youth

Eva Dolak, Herwig Dürr, Elisabeth Kasal, Monika Wallergraber

Austrian Federal Forests

Norbert Putzgruber

Austrian Hail Insurance

Kurt Weinberger, Josef Rohregger

Austrian National Bank

Johann Jachs, Martin Much

Federal Environment Agency

Karl Kienzl, Sepp Hackl, Maria Balas, Sabine McCallum

Verbund AHP

Otto Pirker, Michael Tauber

Administrative Project Coordination

Federal Environment Agency
Maria Balas, Sepp Hackl, Karl Kienzl, Sabine McCallum

Table of Contents

Abstract	7
1 The StartClim research programme	10
2 StartClim2009.A: Vegetation change according to different climate and management conditions in Austrian mountain grassland – a case study on Styrian mountain grasslands	11
3 StartClim2009.B: Climate-growth response of Norway spruce provenances in the Alpine region – an opportunity for adaptation of Austrian forest management	14
4 StartClim2009.C: Analysis of vulnerability and adaptation to climate change in the Wienerwald biosphere reserve	16
5 StartClim2009.D: Humus assays as a practical tool for farmers to support carbon sequestration in agriculture	19
6 StartClim2009.E: Adapting office buildings to climate change: optimisation of thermal comfort	22
7 StartClim2009.F: AlpinRiskGP – Estimation of present and future risk potential for Alpine tourists and infrastructure caused by glacier retreat and permafrost changes in the Grossglockner-Pasterze glacier area (Hohe Tauern, Austria)	24
References	26
Annex	41

Abstract

Analyses of the impact of climate change and corresponding measures to mitigate them are already accepted in many fields and are seen as necessary measures. However, knowledge about the need for adaptation to climate change is still not sufficiently widespread or accepted. Unlike mitigation, adaptation is more decentralised and often has to take place at the local level. There are still many unanswered or not yet formulated scientific questions.

StartClim is therefore once again looking at the subject of adaptation to climate change as a way of contributing to the development of an Austrian strategy in this regard.

The intensity of grassland farming (timing and frequency of cutting, fertilisation) has increased during the last decades throughout Europe. Besides strong commercial constraints, many farmers have probably intensified production because of climate change. Systematic studies of the central Styrian Enns valley have revealed a decline in the diversity of plant species between 1997 and 2010, as a result not so much of adaptation to climate changes as of changes in management intensity.

Climate change in this region has manifested itself amongst other things through an extension of the vegetation period in the years 1987 and 1994 of around three weeks compared with previous decades. It starts two weeks earlier because of more rapid warming in spring and ends one week later because of deferred winter onset. According to model calculations, this allows valley grasslands to be cut four times a year instead of three and mountain grasslands to be cut three times instead of two or three (occasionally four) customary or possible previously.

The more intensified grassland farming in the last thirteen years has been reflected in an increase in cutting frequency, a shift from solid dung to slurry and an earlier first cut. One of the focuses of the investigation was to examine how natural grassland vegetation, today re-seeded with modern grass and clover cultivars, reacted to this intensification.

Mean ecological indicator values calculated from the species composition showed no change in vegetation as a result of climate change. However, the increase in cutting frequency and the change from solid dung to slurry produced significant changes including species loss, even in grassland cut three times with no change in management. It mostly affected ruderal taxa, which were very frequent in 1997. Species traditionally seen in grasslands cut twice also become rarer. Certain species with strong vegetative propagation (*Poa trivialis*, *Trifolium repens*) also spread more in 2010 in intensively managed three-cut systems than in the original census.

As the documented increase in mean annual temperature is still under 1°C, the direct impact of climate change is barely perceptible in closed vegetation systems. The possible effects of climate warming on mountain grassland ecosystems is apparently overlaid by the influence of changed management forms. As a result of the more frequent early utilisation and the increase in cutting, the prolongation of the vegetation period also has an indirect impact on grasslands by reducing the variety of species and increasing the amount of weeds.

These results are characteristic for the mountainous grasslands in the eastern Alps but they cannot be extrapolated generally. At least two or three further representative case studies (Waldviertel, northern Tyrol, Carinthia) are required to corroborate the findings.

Forests play an essential role in preserving natural resources such as water and soil and in maintaining regional biodiversity under changing climatic conditions. The tree species that determine a particular forest ecosystem are directly affected because they cannot evolve fast enough to keep up with the speed of climate change. However, the natural distribution of most tree species over large parts of Europe gives tree species a high tolerance to different climatic conditions. This intraspecific variation has long been used in forest management to improve the productivity and quality of forest plantings based on provenance tests. Moreover, the intraspecific variation in climate response can be used to adapt current forests to future

climate conditions without disturbing ecosystem functions. This can be done, for example, by using seeds from trees that are tolerant of dryness and less sensitive to heat. In this project the climate response of Norway spruce (*Picea abies*) was investigated based on results from an Austrian provenance test series with 540 provenances planted on 44 test plots.

At planting sites with 8°C mean annual temperature the height of 15-year-old Norway spruce trees averaged 400 cm, whereas at sites with 4°C mean annual temperature trees reached only 100–150 cm. The height of trees decreased with increasing temperature difference between provenance and planting site. This would appear to predict a rise in tree heights as a result of climate change in Austria in general, though not to an equal extent for all provenances. Furthermore, the increase in tree height is not likely to be unlimited. At very dry test sites limits to productive capacity are already noticeable. These sites will hardly be affected by climate change. In contrast, the effects of drought and pest infestations can be expected to increase.

The aim of the next study was to assess the vulnerability to climate change of the ecosystem in the Wienerwald biosphere reserve and to analyse the effects of forest management adaptation. The study region was defined as the forest area owned by the Austrian Federal Forests within the biosphere reserve.

The PICUS 1.4 forest ecosystem model was used to simulate forest development for typical stand-site combinations for a period of 100 years (2001–2100). For the simulations a baseline climate dataset (instrumental period 1961–90) and three climate change scenarios were used. The simulated stands were beech stands of different age classes. To analyse the effects of different management regimes a “business as usual” (BAU) and an adaptive management concept (AM) were simulated. In contrast to the BAU management, the AM was characterised by heavier thinnings and the introduction of oak as an admixed species.

The results show that in the first half of the twenty-first century productivity of BAU under climate change conditions remained more or less at the level of the baseline climate. In the second half a slight decrease of productivity was observed for BAU. In general, the productivity of AM without climate change was below the level with BAU management. However, under climate change conditions the AM was more stable and resulted in productivity very similar to the BAU management. The results indicate that adaptive management concepts will be able to provide the required ecosystem performance in the Wienerwald biosphere reserve under the analysed climate change scenarios.

The humus content of the soil is of critical importance in connection with climate change. With increasing soil humus content, carbon is sequestered in the soil in the medium term and hence kept out of the atmosphere. Soil with high humus content holds more water and supplies crop plants longer under dry conditions. It also allows greater water infiltration in heavy rain, and so reduces erosion. Improving the humus content of the soil also increases cation exchange capacity and nutrient storage.

In the last few years, (organic) farmers have been made aware of the value of soil humus. With the help of humus assays, farmers can find out how their crop rotation and management measures affect the humus content of the soil. However, the simple humus assay method used at the moment does not take sufficient account of regional crop rotation and yield conditions and certain management measures, such as cover crops.

A humus assay method needed to be found that could be calculated quickly using input data collected easily by farmers, and that indicated the humus development on farms in the Weinviertel with acceptable accuracy as a way of providing farmers with a tool to plan and better understand carbon sequestration in agriculture.

Five humus assay methods were assessed using data from the STIKO long-term field experiment by Bio Forschung Austria (BFA). The results of the different humus assays were compared with data for humus content in the compost-fertilised soils measured after 12 years. The forecast accuracy of the five humus assay methods differed widely. While the HE (REPRO), Bayerische Landesanstalt für Landwirtschaft and Kolbe methods showed devia-

tions of -8, +12 and -13 per cent from the measured values and predicted the development of soil carbon content fairly accurately, the VDLUFA and ROS methods had deviations of +69 and +94 per cent and thus clearly overestimated the carbon content.

After discussion with farmers and with account taken of the data available and the costs of humus assays, the Kolbe method was chosen. Subsequent tests of this method using data from working farms were successful and this method will therefore be used in future in BFA's regular workshops for farmers from other regions.

A comparison of the amount of carbon sequestration that could be attained by humus accumulation in agricultural soils with Austria's carbon dioxide emissions and the Austrian Kyoto commitments shows that carbon sequestration in agricultural soils could make an appreciable contribution to the reduction of greenhouse gas emissions. This contribution could come into effect quickly, as the techniques to be used are well known. The humus accumulation achievable in practice will not suffice, however, to compensate for all of the carbon dioxide emissions from fossil fuels. The sequestered carbon will nevertheless improve soil functions such as water-holding capacity, which is valuable particularly with a view to adaptation to climate change.

Natural processes in high mountains (e.g. rock fall) are likely to increase as a result of climate change and could thus become a hazard for people and infrastructure. While an elaborate system of permanent and temporary protective measures exists for residential areas, transport routes and highly frequented tourist areas (e.g. ski slopes), the safety of persons moving outside these protected areas on trails and routes cannot be guaranteed. Rock fall and other denudation processes, mainly caused by glacier retreat and permafrost degradation, were therefore studied and modelled in one of the most visited high mountain areas in Austria. Based on the modelling results, it was possible to plot geomorphological hazard maps subdividing the study area into four hazard classes. By overlaying the hazard maps with trail and route network information, vulnerability maps were created. Local stakeholders then reviewed these maps and considered possible measures, ranging from targeted trail protection to new organisational forms of trail maintenance. The developed method is easily transferable to other study sites.

The reduction of cooling energy demand in office buildings while maintaining comfortable indoor thermal conditions is an important consideration in the light of global warming and an imminent shortage of energy. The effectiveness of various cooling strategies was compared using model calculations.

More efficient electronic appliances and energy-saving lighting would more than compensate for the anticipated increase in cooling energy required as a result of climate change. Shifts in the time window during which users are present and their appliances are in use away from the hottest time of day or a reduction in occupancy through teleworking could reduce the cooling energy demand but are of questionable feasibility in practical and social terms.

In offices with natural ventilation, nocturnal ventilation could improve comfort, but there are no reliable computing tools to calculate the indoor flow conditions as a function of local outdoor wind conditions. The increase in the frequency of warm nights is also likely to reduce the effect of nocturnal cooling.

Innovative technologies such as radiative and evaporative cooling were also investigated. Radiative systems draw on the radiative cooling potential of cold night skies whereas evaporative systems extract warmth from indoor spaces through water evaporation. The combination of these two systems with conventional systems to cover peak loads in office buildings proved to be the most feasible option.

1 The StartClim research programme

The StartClim climate research programme is a flexible instrument. Because of the short project duration it can react quickly to topical aspects of climate and climate change. It is financed by a donor consortium consisting of nine institutions (see page 4).

Analyses of the impact of climate change and corresponding measures to mitigate them are already accepted in many fields and are seen as necessary measures. However, knowledge about the need for adaptation to climate change is still not sufficiently widespread or accepted. Unlike mitigation, adaptation is more decentralised and often has to take place at the local level. There are still many unanswered or not yet formulated scientific questions.

StartClim is therefore once again looking at the subject of adaptation to climate change as a way of contributing to the development of an Austrian strategy in this regard.

The projects in StartClim2009 deal with agriculture, silviculture, hazards in Alpine regions, and building engineering.

The StartClim2009 report contains an overview of the results in German and English along with separately bound documentation in which the individual projects are described in detail by the respective project teams. All reports and documents about StartClim2009 will be made available for download at <http://www.austroclim.at/startclim>, the StartClim website. A limited number of CDs with all StartClim reports and folders with a short summary will also be published.

2 StartClim2009.A: Vegetation change according to different climate and management conditions in Austrian mountain grassland – a case study on Styrian mountain grasslands

In recent years grassland management has changed with respect to the timing and frequency of cutting and the type of fertilisation. Apart from economic constraints, this is probably a reaction to climate change. This study investigated the development of grassland vegetation in the central Enns valley in Styria between 1997 and 2010 in the light of these changes.

The studied grasslands were at an altitude of between 640 and 1,200 metres and were situated between Tauplitz (Northern Limestone Alps), Stainach, Irdning (Enns valley) and Openberg (Lower Tauern). A total of 49 records were taken of test areas in which the cutting frequency had increased between 1997 and 2010 or the type of fertilisation (from solid dung to slurry) had changed. They were compared with plots in which no changes had taken place (see table 1). Apart from the composition of the cover vegetation, changes in the yield on first cutting and selected soil chemistry parameters were also noted.

Tab. 1: Grassland management options

Variant	Cutting frequency 1997	Cutting frequency 2010	Manure type 1997	Manure type 2010
1	2	2	solid	solid
2	2	2	slurry	slurry
3	2	2	solid	slurry
4	2	3	solid	solid
5	2	3	slurry	slurry
6	3	3	solid	solid
7	3	3	slurry	slurry
8	3	4	solid	slurry

Regional climatic data from three stations show that in the period 1987–94 the vegetation period was three weeks longer than it had been in previous decades (see Fig. 1). It started about two weeks earlier because of more rapid warming in spring and ended one week later because of deferred winter onset. A model for estimation of possible maximum cutting frequency per year showed an increase from three to four in the valley and from two to three at higher altitudes.

The intensification of grassland farming in the last 13 years has been reflected in an increase in cutting frequency, a shift from solid dung to slurry and an earlier first cut.

Model calculations show no change in vegetation attributable to warming, in other words the proportion of thermophil plants has not increased. A change in vegetation as a result of the earlier first cut was observed but the change is not significant. By contrast, the increased cutting frequency and switch from solid dung to slurry produced significant changes in vegetation (higher Sørensen indices between 1997 and 2001), in particular a reduction in species diversity (fig. 2). In grasslands cut three times instead of twice as in 1997 there was a mean species loss of 9.1; in grasslands that continued to be cut three times the species loss was 4.8; and in those cut four times instead of three there were 5.8 fewer species than in 1997. There was a slight though not significant change in vegetation as a result of an earlier first cut.

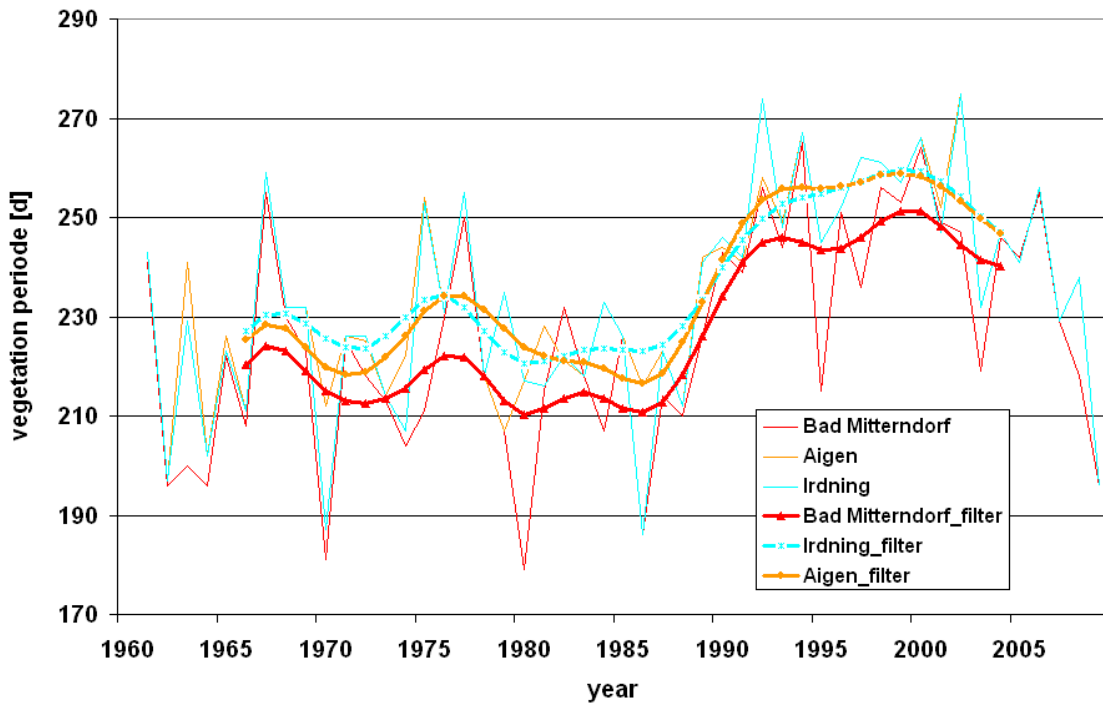


Fig. 1 : Changing length of vegetation period (days) at three meteorological stations in the central Styrian Enns valley between 1960 and 2009 (single years and Gauss filter 11y).

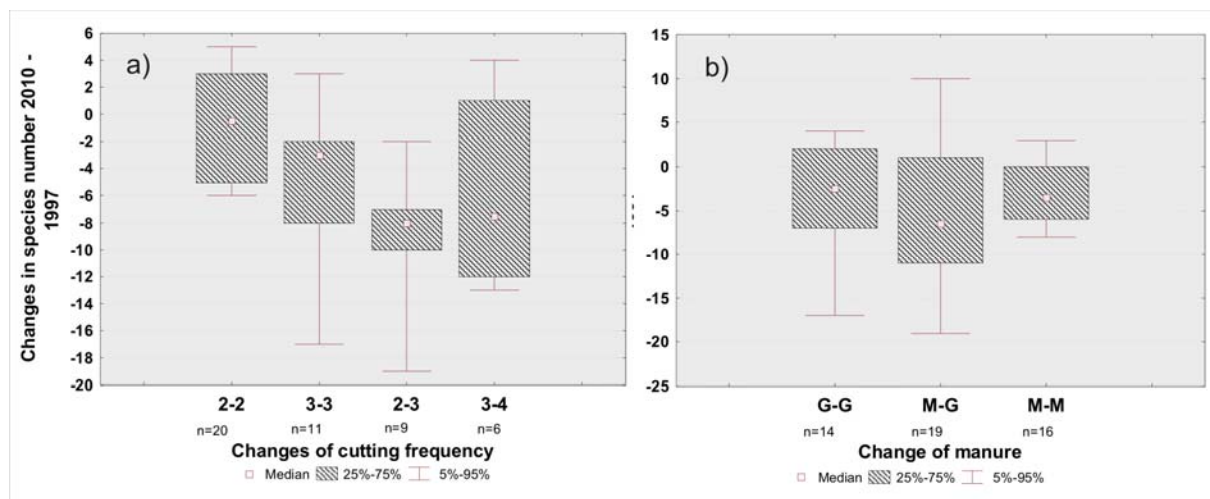


Fig. 2 : Change in species numbers (excluding annuals) between 1997 and 2010 in plots with changed or unchanged cutting frequency (a) or type of manure (b).

A reduction in species was also noted in grasslands with an unchanged frequency of three cuts per year. This was attributable in part to the loss of gap fillers (e.g. shepherd's purse, great plantain), which were very common in 1997, and species frequently found in grasslands cut twice (e.g. spreading bellflower, ox-eye daisies). In 2010, competitive species with high dissemination and reproduction potential (rough meadow grass, white clover) were more abundant in intensively exploited grasslands with three cuts than they had been in 1997. There were fewer changes in species composition as a result of different fertilisation techniques, the most prominent although not significant being in the switch from solid dung to slurry in grasslands cut three times.

In summary, direct effects of climate change on species composition in grassland are not yet discernible since the warming (annual mean temperature) is still less than 1°C. The possible impact of climate change on mountain grassland ecosystems is currently overlaid by

changes in management strategies. Because of the earlier date at which the grassland is used and an increase in the cutting frequency, however, the shift in the vegetation period has an indirect effect resulting in a decrease in species diversity and an increase in weeds. This development has also led to the disappearance of colourful and attractive meadow flowers (fig. 3).



Fig. 3 : Colourful meadows (left) have become less frequent in managed grassland of the Enns valley because climate change has led to earlier and more frequent cutting.

The investigation area is fairly representative of Austrian mountainous grasslands, but the results cannot be extrapolated for the entire country. At least two or three further representative case studies (Waldviertel, northern Tyrol, Carinthia) are required for corroboration.

3 StartClim2009.B: Climate-growth response of Norway spruce provenances in the Alpine region – an opportunity for adaptation of Austrian forest management

Forests play an essential role in preserving regional biodiversity. The tree species that determine a particular forest ecosystem are directly affected because they cannot evolve fast enough to keep up with the speed of climate change. However, the natural distribution of most tree species over large parts of Europe makes them highly tolerant to different climatic conditions. Tree populations of the same species therefore adapt to different climates and respond differently to climate changes. This diversity in climate response is crucial for the adaptability of species to environmental changes.

Based on provenance tests, intraspecific tree variation has long been used to improve the productivity and quality of forest plantings. Today, the variation in climate response can be used to adapt current forests to future climate conditions without disturbing ecosystem functions.

In this project we investigated the diversity of Norway spruce (*Picea abies*), the economically most important tree species in Austria, based on height measurements of 15-year-old trees from 379 provenances planted at 29 test sites in Austria. The results were entered into a database. Together with climatic data of all provenance locations and test sites, a thorough analysis could be conducted for the first time.

At each site we found considerable height differences among tested provenances. Figure 4 shows results of the test site St. Stephan (Styria) as an example.

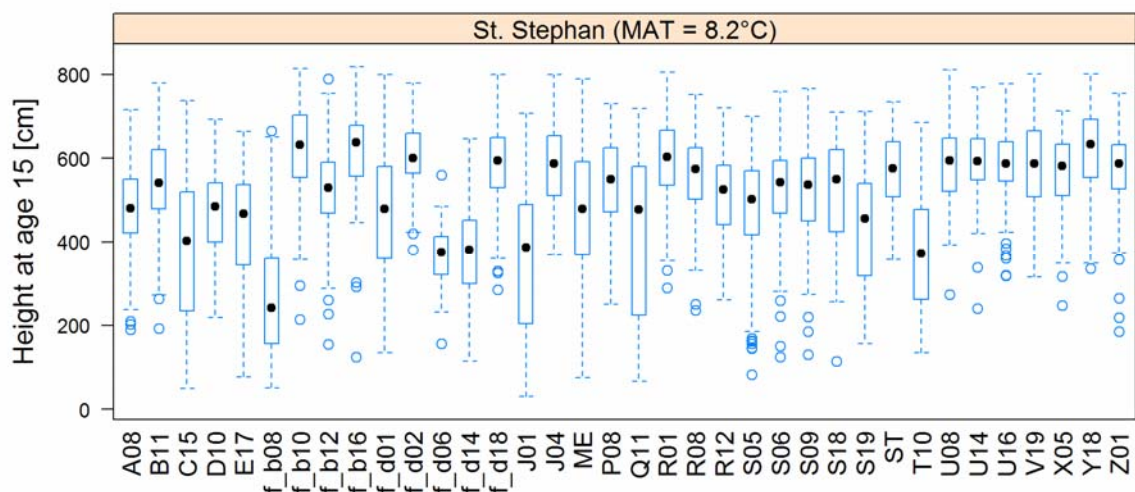


Fig. 4 : Tree heights of all tested provenances at the test site St. Stephan (Styria). Each boxplot shows median and variation in tree heights of one provenance based on single tree measurements.

In combination with climate data, climate-response (fig. 5, left) and climate-transfer functions (fig. 5, right) were derived. Climate-response functions show the correlation between tree height and climate (here: mean annual temperature) for a single provenance planted at several test sites, while climate-transfer functions show the correlation between height and climatic difference between planting site and provenance location for a single test site.

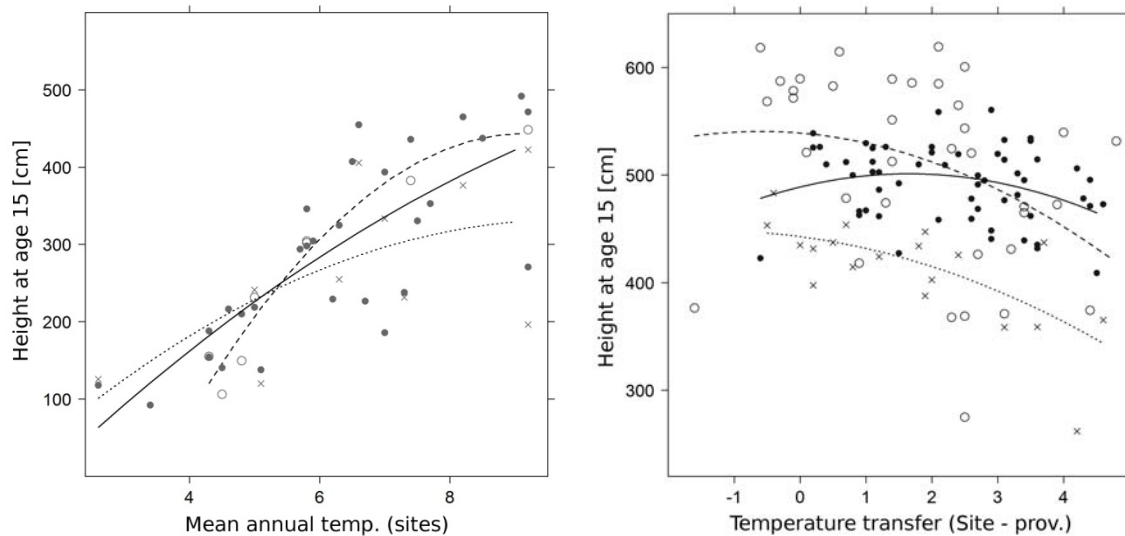


Fig. 5 : **Left:** Climate-response functions of three provenances (Murau: continuous line, Liezen: dashed line, Chepelare (Bulgaria): dotted line) show that in general an increase in tree heights can be expected with rising mean annual temperatures (MAT). All data points are mean tree heights of one provenance at one test site. The temperature response varies depending on the provenance. **Right:** Climate-transfer functions of three test sites (Schönborn: continuous line, St. Stephan: dashed line, Wieselburg: dotted line) show the influence of temperature differences between test sites and provenance location (prov.). This influence varies depending on the local climate of the test site. Data points are mean tree heights of tested provenances.

These functions can be used to estimate the growth potential of specific tree provenances and their adaptability to climate change.

Mean annual temperature (MAT) or other correlated climate parameters (e.g. length of vegetation period) can be used to predict tree height. Generally, height increases with temperature at test sites: at sites with an MAT of 8°C trees reached an average height of 400 cm in 15 years, whereas with an MAT of 4°C they grew only up to 100–150 cm. The variances are very high, however (fig. 5, left). With the impending climate change, an increase in the productive capacity of Norway spruce can be expected in Austria. However, spruce populations from different regions will not be affected equally by warmer temperatures. For one reason, trees of different provenance will react differently to climate change (fig. 5, left) on account of the local climate conditions in the provenance region. Second, the effect of increasing temperatures varies from site to site (fig. 5, right). In very dry and warm sites, limits to the productive capacity of spruce are already noticeable (fig. 5, right – continuous line). These sites will hardly be affected by further warming; on the contrary, additional droughts and pest infestation can be expected. Since more and more regions will suffer from drought conditions, its consequences should be investigated in greater depth.

These analyses do not make full use of the potential of the Norway spruce provenance test of 1978. The investigations will continue within the INTERREG project MANFRED with the inclusion of international provenance studies.

4 StartClim2009.C: Analysis of vulnerability and adaptation to climate change in the Wienerwald biosphere reserve

The aim of the study was to assess the vulnerability of ecosystems in the Wienerwald biosphere reserve to various climatic change scenarios and to analyse the effects of ensuing adaptations to climate change.

The study region was defined as the forest area owned by the Austrian Federal Forests within the biosphere reserve (fig. 6).

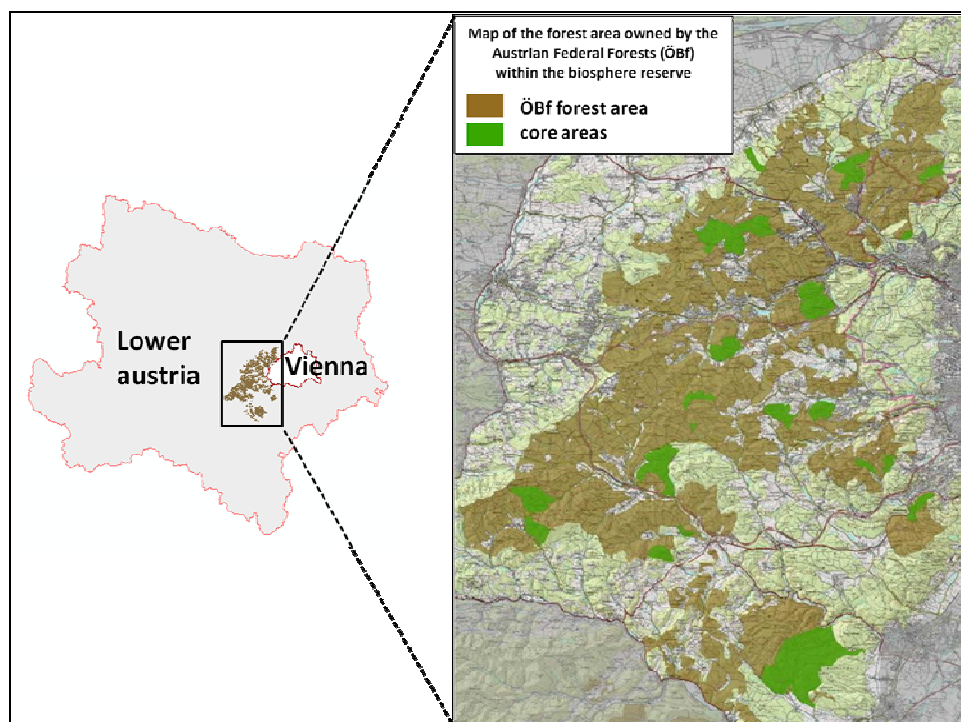


Fig. 6 : Map of the Wienerwald biosphere reserve located south-west of Vienna. Brown = forest area owned by the Austrian Federal Forests (ÖBf), green= core areas.

The PICUS 1.4 forest ecosystem model was used to simulate forest development for typical stand-site combinations for a period of 100 years (2001–2100). The model simulated forest development based on individual trees and considered the dynamic interaction of regeneration, growth and mortality. For the analysis three transient climate change scenarios for the period 2000–2100 generated by a regional climate model were used. They were based on “business-as-usual” emission scenarios A1B and A2, and on an environmental friendly scenario B1. As a reference for the analysis a baseline climate derived from the instrumental period 1961–1990 was used. Figure 7 shows changes in temperature and precipitation in the climate change scenarios in relation to the baseline climate.

For the present study two common site types were selected (limestone site with medium soil depth, fresh site with deep soil) representing the range of ecological conditions in the biosphere reserve. Typical beech stands of different age classes were chosen to analyse two different management regimes (“business as usual” (BAU) and “adaptive management” (AM)). The BAU regime was a traditional beech management concept dominated by thinnings from below (light thinnings). The desired natural regeneration of beech was achieved by a shelterwood cut and subsequent overstory removal. The AM regime was characterised by heavier crown thinnings. After beech regeneration had been established via a shelterwood approach, oak was introduced by planting. The six vulnerability indicators “productivity”, “damage by disturbances”, “standing stock”, “biodiversity”, “carbon storage” and “cost

intensity” were used to compare the different combinations of site types, management regimes, age classes and climate scenarios.

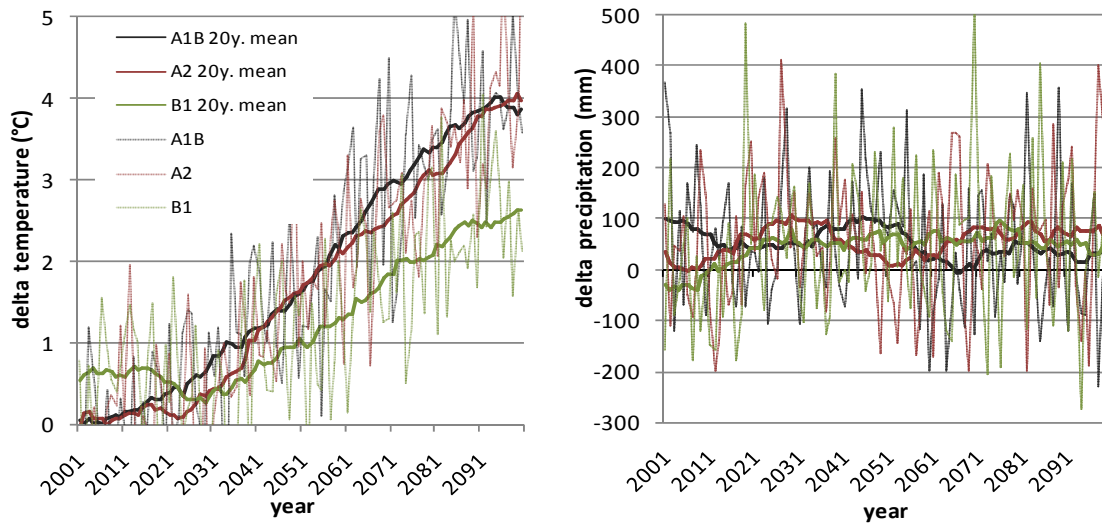


Fig. 7 : Changes in mean annual temperature and annual precipitation in the climate change scenarios A1B, A2 and B1 in relation to the baseline climate. Shown are mean values over 66 plots of the Austrian National Forest Inventory (ANFI) in the region of the Wienerwald biosphere reserve.

The results showed that in the first half of the twenty-first century BAU productivity under climate change conditions remained more or less at the level of the baseline climate. In the second half a slight decrease in productivity was observed for BAU. As an example, in Figure 8 the indicators for a young age class at the fresh site type with deep soil for the period 2051–2100 are illustrated. The analysis showed the strongest decrease in productivity in the A1B scenario relative to the baseline climate. This might be caused by drought effects due to a periodic decrease in precipitation after 2050 in combination with higher temperatures (Figure 7). In general, AM productivity without climate change was below that for BAU management. However, under climate change conditions the AM regime was more stable with productivity very similar to BAU management. There were no differences between the two man

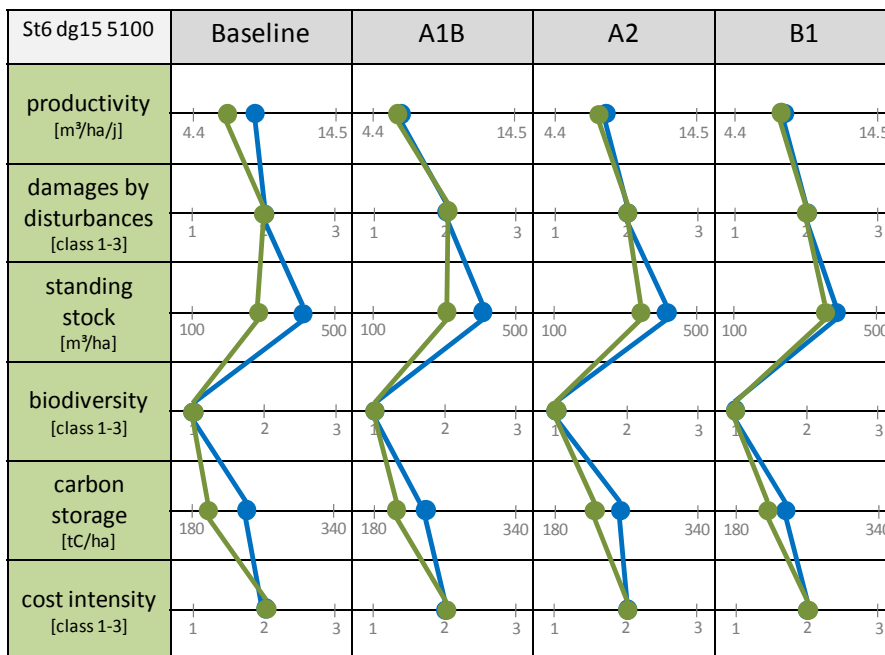


Fig. 8 : Pattern of BAU and AM management for a combination of site type, age class and period of analysis (fresh site type with deep soil, mean stem diameter 15 cm, period of analysis: 2051–2100) for

baseline climate and the three climate change scenarios A1B, A2, B1. blue line/dots = business as usual (BAU) management; green line/dots = adaptive management (AM) concept.

agement concepts with regard to the indicator “damage by disturbances”, because the regeneration phase was too late within the analysis period. The introduction of oak in the regeneration layer did not yet have an influence on the biomass composition of the stand and on the simulated predisposition against snowbreak and windstorm. The same applied to biodiversity. As a result of heavier thinnings the standing stock in the AM regime was lower than in the BAU concept. Because differences in productivity between BAU and AM decreased with climate change, these differences decreased over time.

For all combinations of site type, age class, and period of analysis the indicators “standing stock” and “carbon storage” were highly affected by the management concept. Because of the approximate ordinal scale (three classes) the indicators “damage by disturbances”, “biodiversity” and “cost intensity” showed less or no sensitivity to management. In all cases only differences within one class were detected. The indicators “damage by disturbances” and “cost intensity” remained average (class 2), while the indicator “biodiversity” remained low (class 1). If the costs for protection against browsing and fraying of game were included in the AM, the “cost intensity” would increase and thus lead to a less favourable classification.

The results indicated that moderate adaptive management concepts (admixed oak) are able to provide the required ecosystem performance in the Wienerwald biosphere reserve within the analysed climate change scenarios. Without climate change the AM concept would show losses in productivity. Therefore the AM was not a clear win-win option, but meant that biomass productivity was less climate-sensitive. In economic terms it should be taken into account that oak can compensate for productivity losses through higher revenues per cubic metre of timber, depending, of course, on the relationship between the price of beech and oak. Because of the difficulty in predicting such relationships and also timber quality, these factors were not considered in the analysis.

5 StartClim2009.D: Humus assays as a practical tool for farmers to support carbon sequestration in agriculture

The humus content of the soil is of critical importance for mitigating global warming and adaptation to climate changes. With increasing soil humus content, carbon is sequestered in the soil in the medium term and hence kept out of the atmosphere. Soil with high humus content holds more water and supplies crop plants longer under dry conditions. It also allows more water to infiltrate in heavy rain and so reduces erosion. Improving the humus content of the soil also increases cation exchange capacity and nutrient storage.

The soil practitioner training course, which was developed by Bio Forschung Austria (BFA) together with Distelverein and Bio Austria and which has now been held for the third time in the Weinviertel, makes (organic) farmers aware of the value of soil humus. With the help of humus assays, farmers can find out how their management measures affect humus content. However, the simple humus assay method used by BFA at the moment does not take sufficiently account of regional conditions and certain management measures, such as cover crops.

The aim of this project was to find a humus assay method that could be calculated quickly using input data obtained easily by the farmers while at the same time indicating the humus development on farms in the Weinviertel with acceptable accuracy as a way of providing farmers with a tool to plan and better understand carbon sequestration in agriculture

Five humus assay methods were assessed using data from the STIKO long-term field experiment by BFA. Three treatments with compost fertilisation (at rates of 9, 6 and 24 tons compost /ha /year) were used as models for humus-increasing management. The results of the different humus assays were compared with the soil humus content of the compost-fertilised soil after 12 years of management.

The humus assay methods tested were:

- the humus unit method (HE method) by Leithold et al., 1997, in its dynamic form using the humus assay software REPRO (Hülsbergen, 2002)
- the humus assay method of the Bayerische Landesanstalt für Landwirtschaft (Bayer. LfL; www.lfl.bayern.de/iab/bodenschutz/12458/)
- the humus assay method by Kolbe (Kolbe, 2007)
- the VDLUFA humus assay method, calculated using the upper values (VDLUFA, 2004) and
- the ROS (Reproduktionswirksame organische Substanz) method (Autorenkollektiv, 1977).

The forecast accuracy of the five humus assay methods differed widely. While the HE (REPRO), Bayerische Landesanstalt für Landwirtschaft and Kolbe methods showed deviations of -8, +12 and -13 per cent from the measured values and predicted the development of soil carbon fairly accurately, the VDLUFA and ROS methods had deviations of +69 and +94 per cent from the measured values and thus clearly overestimated the soil carbon.

The results of this comparison were discussed with farmers from the Weinviertel and information was collected as to the availability, detail and accuracy of the management and yield data they could provide for the humus assays. With account taken of the data available and costs, the Kolbe method was chosen.

Humus assays using the Kolbe method do not require too much time and effort, but at the same time they permit several soil types to be distinguished and include a gradation of the effectiveness of organic fertiliser as a function of the amount applied.

Calculations of the sensitivity of humus assay to inexact or incorrect estimations of straw weight and cover crop biomass showed that the error arising from a false estimation of straw

weight for one ton was up to 120 kg C/ha, while the error arising from a false estimation of cover crop biomass was only up to 20 kg C/ha. As practical farmers usually do not have data for cover crop biomass, it is therefore feasible to estimate cover crop biomass using reference data from cover crop experiments of BFA.

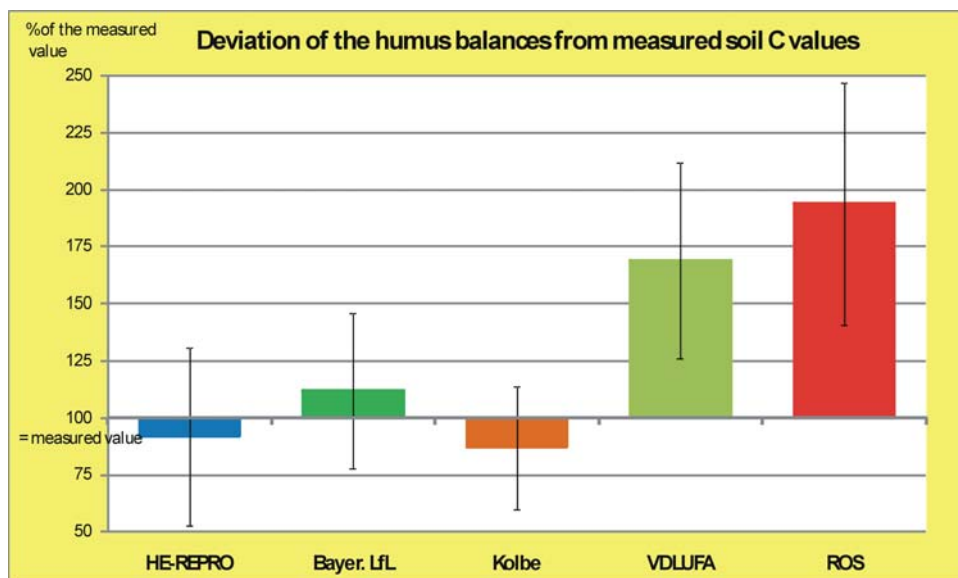


Fig. 9 : Deviation in the organic carbon assays calculated with five different humus assay methods from the organic carbon values measured in the compost-fertilised soil in the STIKO study.



Fig. 10 : Soil profile with humus-rich A horizon and with cover crop.

Subsequent tests of the Kolbe method using working farm data were successful. This method will therefore be used in future in BFA's regular workshops for farmers.

The changes in soil carbon stocks computed in this project ranged from +370 to +1100 kg C/ha/year in the field experiment with compost fertilisation and from -300 to +480 kg C/ha/year on farmers' fields. The assay of +480 kg C/ha/year was achieved by compost fertilisation and growing fodder and cover crops.

Assuming (optimistically) that by promoting management methods that increase soil carbon, 500 kg C/ha/year could be sequestered on all of Austrian cropland (1.39 million hectares), a total of 0.7 million tons of carbon per year, corresponding to 2.55 million tons of carbon dioxide per year stored in the soil. Austria's total carbon dioxide emissions were 73.6 million tons in 2008, while the total greenhouse gas emissions amounted to 86.6 million tons of carbon dioxide equivalents. In order to achieve our Kyoto target, emissions will have to be reduced by 17.8 million tons of carbon dioxide equivalents per year.

This comparison shows that carbon sequestration in agricultural soils could make an appreciable contribution to a reduction in greenhouse gas emissions. This contribution could come into effect quickly as the techniques to be used are well known. The humus accumulation achievable in practice will not suffice, however, to compensate for all of the carbon dioxide emissions from fossil fuels. The sequestered carbon will nevertheless improve soil functions such as water-holding capacity, which is valuable particularly with a view to adaptation to climate change.

6 StartClim2009.E: Adapting office buildings to climate change: optimisation of thermal comfort

The reduction of cooling energy demand in office buildings while maintaining comfortable indoor thermal conditions is an important consideration in the light of global warming and an imminent shortage of energy. The effectiveness of various cooling strategies was compared using model calculations. The study also investigated optimisation strategies in buildings using models to calculate heat balances in buildings and evaluated the effectiveness of innovative cooling technologies.

Improving the energy efficiency of electronic devices and artificial lighting significantly lowers the internal heat loads and the demand for cooling energy. The achievable annual savings are commensurate with increases in demand to be expected due to climate change.

It is likely that the theoretical improvement in the energy efficiency of appliances could be taken advantage of in the next few years since the additional cost of more efficient appliances is decreasing. It should be ensured, however, that the gains in efficiency are not cancelled out by the use of additional appliances. Reduced internal heat loads result in increased heating requirements in winter particularly in poorly insulated buildings. In such cases, it is advisable to improve the building insulation.

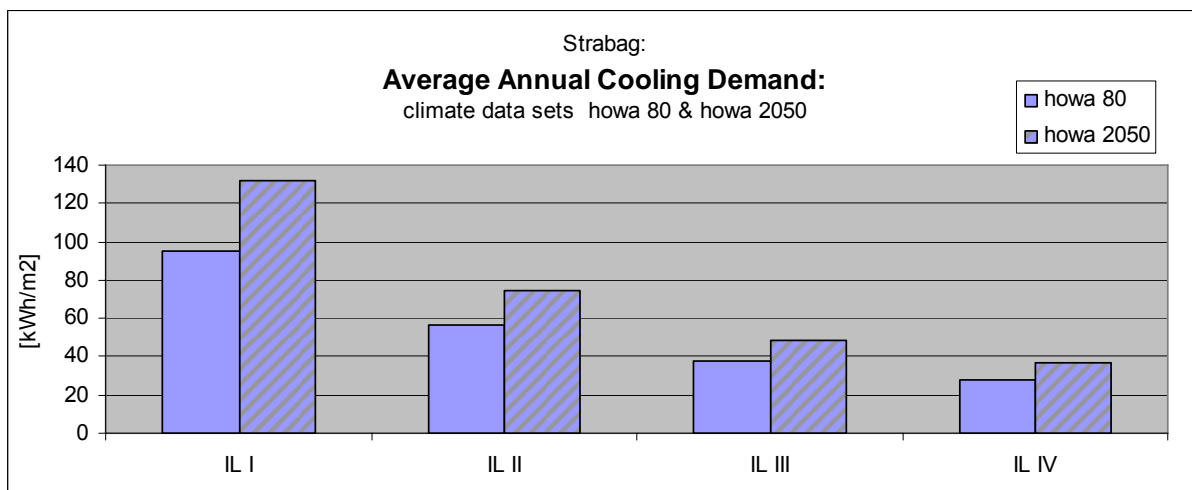


Fig. 11 : Average annual cooling demand of a double office room under present (howa 80) and future (howa 2050) climatic conditions using electronic devices and lighting with different energy efficiency, IL I represents a worst-case scenario while IL IV incorporates the most efficient products currently available on the market.

Changes in the times when rooms are used could also alter the heat loads in office buildings, since heat loads depend not only on occupancy but also on the appliances and lighting the occupants use. Cooling demand could be reduced by shifting occupancy from the hottest hours of the day and by means such as teleworking. As measures of this nature have an impact on working habits, however, the relevant discussion needs to look beyond the thermal energy considerations.

The study demonstrated that in naturally ventilated office rooms, thermal comfort can be optimised to a limited extent through window ventilation. The exact extent of the improvement is largely dependent on the prevailing wind situation and its local impact. Moreover, the increase in warm nights also reduces the effectiveness of nocturnal cooling.

The possibility of improving comfort through external air flows and desktop cooling fans was also studied. Both are possible and often useful. In the first case, however, workable tools for calculating the possible flow rates indoors as a function of the outside wind velocity and direction need to be developed.

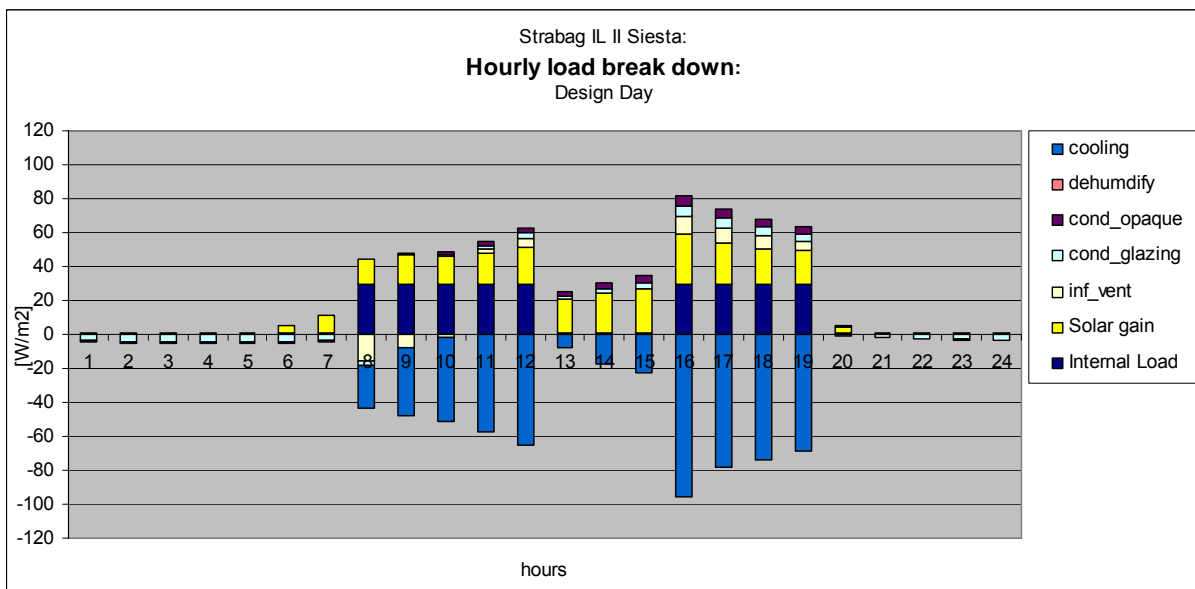
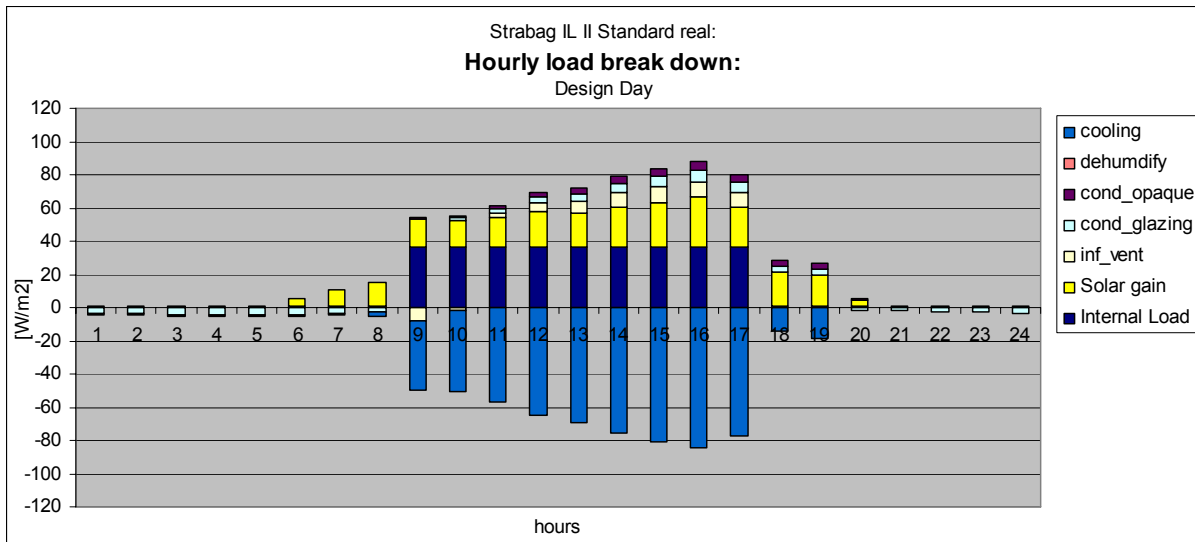


Fig. 12 : Comparison of hourly heat gains and losses in a double office room with a standard design day (above) and a siesta model (below), The absence of users during the siesta period considerable reduces the cooling requirement during this time.

The study also investigated the efficiency and suitability for office buildings of innovative cooling technologies, most of which are not yet available on the market. Radiative systems used heat radiation against the cold night sky to generate cooling energy, while evaporative systems extract heat from the room air through evaporation.

A combination of radiative and evaporative systems in addition to conventional cooling technologies proves to be the most effective way of covering the cooling energy demand in office buildings. The inclusion of building or water storage to combine supply (mostly at night) and demand (during the day) is feasible and in some cases necessary.

7 StartClim2009.F: AlpinRiskGP – Estimation of present and future risk potential for Alpine tourists and infrastructure caused by glacier retreat and permafrost changes in the Grossglockner-Pasterze glacier area (Hohe Tauern, Austria)

As a result of climate change, numerous natural processes in high mountain areas are becoming more intense. In particular, these are processes that reshape the land surface by erosion, transport and deposit of rocks. Such processes have always represented a risk for people and/or infrastructure in high mountain areas. But if the frequency, magnitude and range of hazardous events increases as a result of climate change and there is also an increase in the number of people staying in range at the same time, it is likely that the risk potential will rise in the future at least on a regional scale.

For residential areas and transport routes an elaborate system of permanent and temporary/active and passive protective measures was developed in the late nineteenth century and for areas highly frequented by tourists (e.g. ski slopes) measures were introduced in the twentieth century. These measures are embedded in an integral risk management concept and are implemented consistently throughout most of Austria. However, this is not always the case for marked Alpine trails and unmarked high Alpine routes. For this reason more and more people are considering ways of ensuring the safety for people walking on trails and routes. AlpinRiskGP aims to develop a tool that is able to identify dangerous spots exactly, extensively and in an easily comprehensible manner and thus facilitate the implementation of targeted measures.

One of the most highly frequented high mountain areas in Austria served as a study area, where dangerous processes are mainly caused by glacier retreat and permafrost degradation. The project modelled rock fall and denudation processes. For this purpose, the first step was to model the susceptibility of an area to trigger a process. It was obtained by combining various types of information (e.g. slope, geology). The second step was the process modelling, so that erosion, transport and rock deposit could be determined over the whole study area. Finally, the processes were assessed and served as a basis for the generation of a geomorphological hazard map that subdivided the study area into four hazard classes. This process was repeated using additional climate data to create a scenario for 2030 and generate another geomorphological hazard map.

By overlaying the hazard maps with trail and route network information, vulnerability maps (see figures) were created. These maps make it easier to recognise how severely certain trail or route segments will be affected by dangerous processes. The results show clearly that an increase is likely by 2030 in both the area and number of trails and routes in classes with a high risk potential.

In a final step local stakeholders reviewed the maps and considered possible measures. These include local strategies (e.g. closing or marking new trails) and organisational measures (e.g. installation of a trail information system) and improved training of people who spend their leisure time in high mountain areas. The developed method is easily transferable to other study sites.

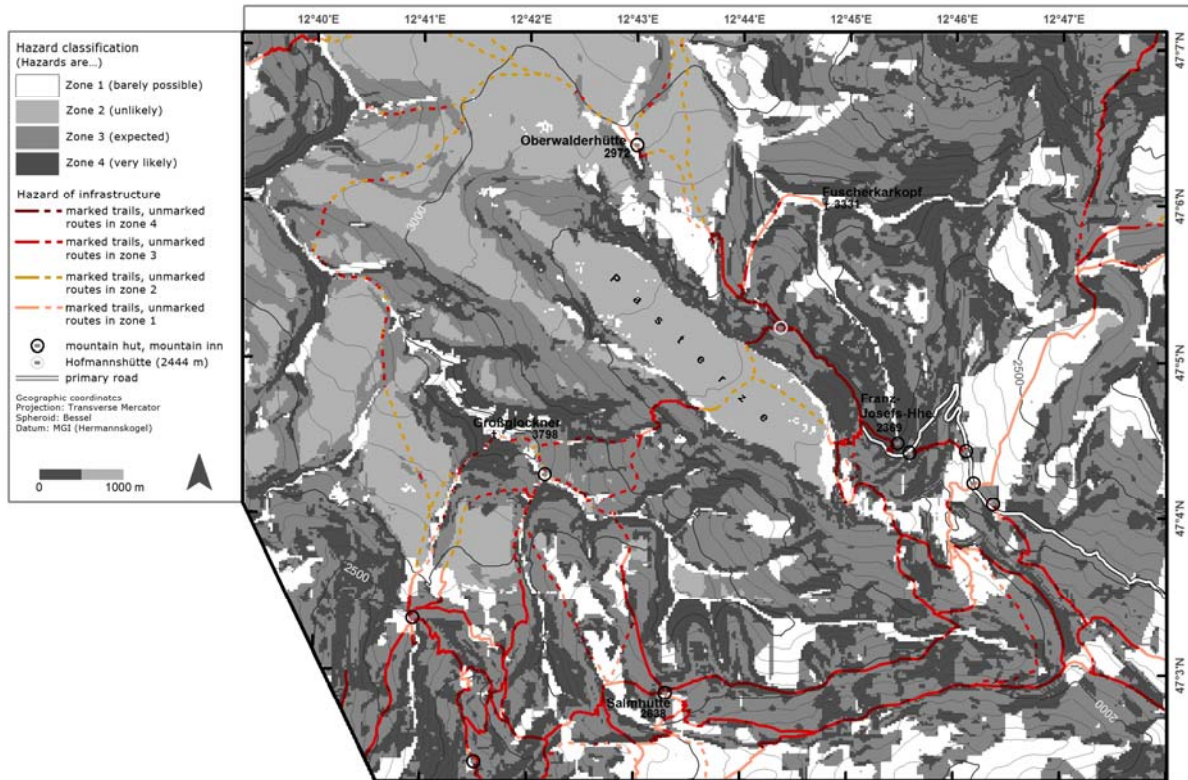


Fig. 13 Vulnerability map 2010

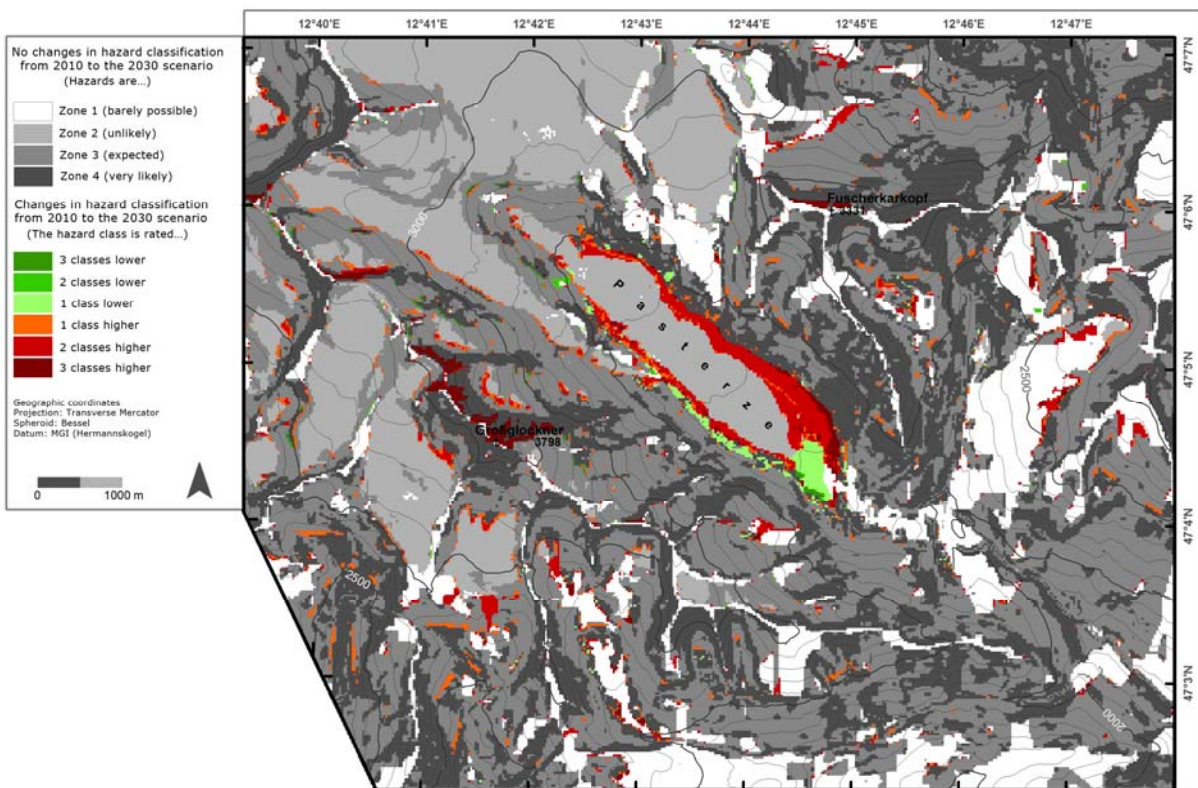


Fig. 14 Differential map of hazard classes 2010-2030

Although the AlpinRiskGP project is just based on a minor climate change scenario with a manageable timeframe of two decades (Scenario 2030), the majority of the expected changes in hazard classes will lead to an increase in hazards (orange to dark red), while the reduction of risk potential will only occur at discrete spots (green).

References

StartClim2009.A

- Adler, W., Oswald, K. & R. Fischer, 1994. Exkursionsflora von Österreich, Ulmer Verlag, Stuttgart.
- Angeringer, W. & G. Karrer, 2007. Preserving species richness in hay meadows of Vienna's nature conservation area Lainzer Tiergarten. *Biocultural Diversity – a global issue. Conference Proceedings*, BOKU, Vienna.
- Bassler, G., Lichtenecker, A. & G. Karrer, 2000. Gliederung der extensiven Grünlandtypen im Transekt von Oppenberg bis Tauplitz. In: *MaB-Forschungsbericht. Landschaft und Landwirtschaft im Wandel – Das Grünland im Berggebiet Österreichs*, Akademie der Wissenschaften, Wien, 51-98.
- Bassler, G., Lichtenecker, L. & G. Karrer, 2003. Klassifikation des Extensivgrünlandes (Feuchtwiesen, Moore, Bürstlinggrasen und Halbtrockenrasen) im Zentralraum des Waldviertels, *Wiss. Mitt. Niederösterreich. Landesmuseum*, 15: 7-48, St. Pölten.
- Bassler, G., Karrer, G. & A. Lichtenecker, 1998. Grünlandtypen im Transekt von Oppenberg bis Tauplitz. Unveröff. Endbericht zum MAB-Pilotprojekt: *Das Grünland im Berggebiet Österreichs*, Wien.
- Billeter, R., Liira, J., Bailey, D. et al., 2008. Indicators for biodiversity in agricultural landscapes: a pan-European study. *Journal of Applied Ecology* 45: 141-150.
- Bohner, A. & M. Sobotik, 2000. Das Wirtschaftsgrünland im Mittleren Steirischen Ennstal aus vegetationsökologischer Sicht. In: *MaB-Forschungsbericht. Landschaft und Landwirtschaft im Wandel – Das Grünland im Berggebiet Österreichs*, Akademie der Wissenschaften, Wien, 15 – 508.
- Bohner, A., 2010. Zeigerpflanzen für die Beurteilung des Bodenzustandes im Wirtschaftsgrünland. 2. Umweltökologisches Symposium, LFZ Raumberg-Gumpenstein, Tagungsband 111-120.
- Braun-Blanquet, J., 1964. *Pflanzensoziologie*. G. Fischer Vlg. Wien.
- Bruehlheide, H., 2003. Translocation of a montane meadow to simulate the potential impact of climate change. *Applied Vegetation Science* 6: 23-34.
- Buchgraber, K., 2007. Die Gemeine Risppe – Ein Problem in der intensiven Grünlandwirtschaft. Österreichische Grünland- und Viehwirtschaftstage für Gunstlagen "Die Wiese als Basis zum Erfolg". St. Georgen im Attergau.
- Buchgraber, K., 2000. Ertragspotentiale und Artenvielfalt auf Grünlandstandorten im Berggebiet. In: *MAB-Forschungsbericht: Landschaft und Landwirtschaft im Wandel*. Akademie der Wissenschaften. 22-23.09.2000, Wien, 181-189.
- Buchgraber, K. & G. Gindl, 2004. *Zeitgemäße Grünlandbewirtschaftung (2. Aufl.)*. Leopold Stocker Verlag Graz, S. 52-55.
- Buckland, D. S.M., Thompson, K., Hodgeson, J.G. & H.P. Grime, 2001. Grassland invasions: effects of manipulations of climate and management. *Journal of Applied Ecology* 38: 301-309.
- Bundesministerium für Land- und Forstwirtschaft, Umwelt und Wasserwirtschaft, BMLFUW, 2006. *Richtlinien für die sachgerechte Düngung (6. A)*, pp. 79.

- Bundesministerium für Land- und Forstwirtschaft, Umwelt und Wasserwirtschaft, BMLFUW, 2010. Bericht über die Lage der österreichischen Landwirtschaft 2009 (51. Grüner Bericht), Wien.
- Danner, M., 2008. Wirtschaftsdünger im Biolandbau – Aufbereitung und Einsatz. Der fortschrittliche Landwirt, Sonderbeilage.
- Dierschke, H. & G. Briemle, 2002. Kulturgrasland - Wiesen, Weiden und verwandte Staudenfluren. Reihe Ökosysteme Mitteleuropas aus geobotanischer Sicht. Verlag Eugen Ulmer Stuttgart, pp. 239.
- Dietl, W. & J. Lehmann, 2004. Ökologischer Wiesenbau. Av Buch, pp. 144.
- Dirnböck, T., Dullinger, S. & G. Grabherr, 2003. A regional impact assessment of climate and land-use change on alpine vegetation. *Journal of Biogeography* 30: 401-417.
- Duckworth, J. C., R. G. H. Bunce, et al. (2000). Vegetation gradients in Atlantic Europe: the use of existing phytosociological data in preliminary investigations on the potential effects of climate change on British vegetation. *Global Ecology & Biogeography* 9: 187-199.
- Ehrendorfer F., 1973. Liste der Gefäßpflanzen Mitteleuropas, 2. Auflage, Gustav Fischer Verlag, Stuttgart.
- Eitzinger, J., 2007. Einfluss des Klimawandels auf die Produktionsrisiken in der österreichischen Landwirtschaft und mögliche Anpassungsstrategien. Ländlicher Raum (on-line) - www.laendlicher-raum.at.
- Ellenberg, H., 1979. Zeigerwerte der Gefäßpflanzen Mitteleuropas (2. Auflage), *Scripta Geobot.*, 9: 1-122.
- Englisch, M., Karrer, G., & H. Wagner, 1991. Bericht über den Zustand des Waldbodens in Niederösterreich. Forstl. Bundesversuchsanstalt Wien und Amt d. Niederösterr. Landesregierung, Wien, 110 pp.
- Flügel, H. W. & F. Neubauer, 1984. Geologie der österreichischen Bundesländer in kurzgefassten Einzeldarstellungen, Steiermark, Geologische Bundesanstalt, Wien.
- Formayer, H., Haas P. & al. 2004. Untersuchung regionaler Klimaänderungsszenarien hinsichtlich Hitze- und Trockenperioden in Österreich. Endbericht von StartClim2004.B in StartClim2004: Analysen von Hitze und Trockenheit und deren Auswirkungen in Österreich, Auftraggeber: BMLFUW, BMWF, BMWFJ. 30 pp.
- Grabherr, G., Gottfried, M. & H. Pauli, 1994. Climate effects on mountain plants. *Nature* 369: 448.
- Grabner, S., Silberberger, I. & W. Hofbauer, 2001. Auswahl der Untersuchungsgemeinde im Bezirk Kufstein und Kitzbühel für das MaB Projekt „Grünland im Berggebiet“. Unveröffentl. Bericht, Innsbruck und Wien.
- Grime, H.P., 2001. *Plant Strategies, Vegetation Processes and Ecosystem Properties*. Second Edition, John Wiley & Sons, Chichester.
- Grime, H.P., J.G. Hodgson & R. Hunt, 1988. *Comparative Plant Ecology. A functional approach to common British species*. London, Unwin Hyman Inc. 742 pp.
- Grünbacher, E., Hann, P., Trska, C., Kromp, B. & H. Formayer, 2007. Auswirkung des Klimawandels auf die Ausbreitung der Engerlingsschäden (Scarabaeidae; Coleoptera) im österreichischen Grünland, Endbericht von StartClim2006.C in StartClim2006: Klimawandel und Gesundheit, Tourismus, Energie. BMLFUW, BMGFJ, BMWA, BMWF
- Harmens, H., Williams, P.D., Peters, S. L., Bambrick, M. T., Hopkins, A. & T.W. Ashenden, 2004. Impacts of elevated atmospheric CO₂ and temperature on plant community structure of a temperate grassland are modulated by cutting frequency. *Grass and Forage Science* 59: 144-156.

- HBFLA Raumberg –Gumpenstein, 2006. Bericht über das 2. Klimaseminar. ISSN: 1026-6267, ISBN: 3-901980-87-3 pp 255.
- Hofer, H.R., 1992. Veränderungen in der Vegetation von 14 Gipfeln des Berninagebietes zwischen 1905 und 1985. Ber. Geobot. Inst. ETH, Stiftung Rübel, Zürich 59: 39-54.
- Hydrographischer Dienst in Österreich, 1994. Hydrographisches Jahrbuch von Österreich 1990. Band: 98. Zentralbüro des Hydrographischen Dienstes, Wien.
- Karrer, G., 1992. Österreichische Waldboden-Zustandsinventur. Teil VII: Vegetationsökologische Analysen. Mitt. Forstl. Bundesversuchsanst. Wien, 168: 193-242.
- Karrer, G. & W. Kilian, 1990. Standorte und Waldgesellschaften im Leithagebirge Revier Sommerein. Mitt. Forstl. Bundesversuchsanstalt Wien, 165: 1-244.
- Klanderud, K. & H.J.B. Birks, 2003. Recent increases in species richness and shifts in altitudinal distributions of Norwegian mountain plant. Holocen 13/1: 1-6.
- Lichtenecker, A., Bassler, G. & G. Karrer, 2003. Klassifikation der Wirtschaftswiesen (Fettwiesen der Arrhenatheretalia) im Zentralraum des Waldviertels. Wiss. Mitt. Niederösterreich. Landesmuseum 15: 49-84.
- Liira, J. et al., 2008. Plant functional group composition and large scale species richness in European agricultural landscapes. Journal of Vegetation Science 19: 3-14.
- McCune, B., 2005: PC-ORD. Multivariate Analysis of Ecological Data, Version 5. MjM Software Design, Gleneden Beach, Oregon, USA.
- Muller, S., Dutoit, T., Alard, D. & F. Grevilliot, 1998. Restoration and rehabilitation of species-rich grassland ecosystems in France: a review. Restoration Ecology 6/1: 94-101.
- Nippert, J.B., Knapp, A.K. & J.M. Briggs, 2006. Intra-annual rainfall variability and grassland productivity: can the past predict the future? Plant Ecology 184: 65-74.
- Pauli, H., Gottfried, M., Reiter, K., Klettner, C. & G. Grabherr, 2007. Signals of range expansions of vascular plants in the high Alps: observations (1994-2004) at the Gloria master site Schrankogel, Tyrol, Austria. Global Change Biology 13: 147-156.
- Pöllinger, A. & E. M. Pötsch, 1998. Wirtschaftsdüngerbehandlung – so veredeln sie ihren Hofdünger! Der fortschrittliche Landwirt. Sonderbeilage Heft 15.
- Pötsch, E., 2010a. Grünland und Almwirtschaft. In: *Grüner Bericht 2010*, Lage der österreichischen Land- und Forstwirtschaft 2009, BMLFUW, Wien.
- Pötsch, E., 2010b. Multifunktionalität und Bewirtschaftungsvielfalt im österreichischen Grünland. 16. Alpenländisches Expertenforum LFZ Raumberg-Gumpenstein, Tagungsband 1-10.
- Pötsch, E. & A. Baumgarten, 2010. Phosphorproblematik im Grünland. Der fortschrittliche Landwirt 18/2010: 30-31.
- Pötsch, E., Graschi, A., Graiss, W. & B. Krautzer, 2008. Alternative Grünlanderneuerung mittels Selbstversamung. 14. Alpenländisches Expertenforum, 2. April 2008, LFZ Raumberg-Gumpenstein, Irdning.
- Price, M.V. & N.W. Waser, 2000. Responses of subalpine meadow vegetation to four years of experimental warming. Ecological Applications 10/3: 811-823.
- Rounsevell, M.D.A., Brignall, A.P. & P.A. Siddons, 1996. Potential climate change effects on the distribution of agricultural grassland in England and Wales. Soil Use and Management 12: 44-51.
- Schaumberger, A., 2005. Ertragsanalyse im österreichischen Grünland mittels GIS unter besonderer Berücksichtigung klimatischer Veränderungen. Veröffentlichungen der HBLFA Raumberg-Gumpenstein, A-8952 Irdning, Heft 42, 66 pp.

- Schmitt, R., 1995. Horstgräser: Lebensdauer, Ertrag, Vermehrungspotential. *Agrarforschung* 2 (3): 108-111.
- Schreiber, K-F., 1997. Sukzessionen - eine Bilanz der Grünlandbracheversuche in Baden-Württemberg. Ber. Landesanstalt f. Umweltschutz Baden- Württemberg, Karlsruhe. 9, 153-162
- Schreiber, K.-F., Brauckmann, H.-J., Broll, G. et al. 2009. Artenreiches Grünland in der Kulturlandschaft – 35 Jahre Offenhaltungsversuche Baden-Württemberg. Verlag Regionalkultur Heidelberg. 421 pp.
- Stampfli, A. & M. Zeiter, 2001. Species responses to climatic variation and land use change in grasslands of Southern Switzerland. *In: Burga, C.A. & Kratochwil, A. (eds.)* Biomonitoring. General and applied aspects and global scales. Kluwer Academic Publishers, Dordrecht.
- Theurillat J-P. & A. Guisan. 2001. Potential impact of climate change on vegetation in the European Alps: A review. *Climatic change* 50: 77-109.
- Trnka, M., Eitzinger, J., Gruszczynski, G. et al., 2006. A simple statistical model for predicting herbage production from permanent grassland. *Grass Forage Sci.*, 61 (3), 253-271.
- Vittoz, P., Randin, C., Dutoit, A., Bonnet, F. & O. Hegg, 2009. Low impact of climate change on subalpine grasslands in the Swiss Northern Alps. *Global Change Biology* 15: 209-220.
- Weigelt, A., Wawer, W.W., Buchmann, N. & M. Scherer-Lorenzen, 2009. Biodiversity for multifunctional grasslands: equal productivity in high-diversity low-input and low-diversity high-input systems. *Biogeosciences Discuss.* 6: 3187-3214.
- Willems, J.H., 1985. Growth form spectra and species diversity in permanent grassland plots with different management. *Münstersche Geographische Arbeiten* 20: 35-43.
- Willems, J.H., 2001. Problems, approaches, and results in restoration of Dutch calcareous grassland during the last 30 years. *Restoration Ecology* 9/2: 147-154.
- Wytrzens, H.K. & C. Mayer, 1999. Multiple Use of Alpine Grassland in Austria and the Implications for Agricultural Policy. *Die Bodenkultur*, 50, 4, 251-261.

(<http://gis.lebensministerium.at/eBOD/>)

(<http://www.ufz.de/biolflor/index.jsp>)

StartClim2009.B

- Alcamo, J., Moreno, J. M., Nováky, B., Bindi, M., Corobov, R., Devoy, R. J. N, Giannakopoulos, C., Martin E. , Olesen, J. E., Shvidenko, A. 2007. Europe. *Climate Change 2007: Impacts, Adaptation and Vulnerability. Contribution of Working Group II to the Fourth Assessment Report of the Intergovernmental Panel on Climate Change*. M.L. Parry, O.F. Canziani, J.P. Palutikof, P.J. van der Linden and C.E. Hanson, Hrsg. Cambridge University Press, Cambridge, UK, 541-580.
- Cade, B.S. & Noon, B. 2003. A gentle introduction to quantile regression for ecologists. *Frontiers in Ecology and the Environment* 1: 412-420
- European Environment Agency 2008. Impacts of Europe's changing climate - 2008 indicator-based assessment. *EEA Report* 4: 246.
- Falster, D. 2003. Plant height and evolutionary games. *Trends in Ecology & Evolution* 18: 337-343.
- Furnival, G., & Wilson, R. 1974. Regression by Leaps and Bounds. *Technometrics* 16: 499-511.

- Koenker, R. 1978. Regression quantiles. *Econometrica* **46**: 33-50.
- Kölling, C. 2007. Klimahüllen für 27 Waldbaumarten. *Allgemeine Forst und Jagdzeitung* **62**: 1242-1245.
- König, A. 2005. Provenance research: evaluating the spatial pattern of genetic variation. *Conservation and Management of Forest Genetic Resources in Europe*: 275–333.
- Konnert, M. 2007. Herausforderung für die Forstgenetik und Forstpflanzenzüchtung. *AFZ - Der Wald* **16**: 866 - 867.
- Langlet, O. 1971. Two hundred years genecology. *Taxon* **20**: 653–721.
- Lexer, M., & Seidl, R. 2007. Der österreichische Wald im Klimawandel–Auswirkungen auf die Waldbewirtschaftung. *Ländlicher Raum - Online-Fachzeitschrift des Bundesministeriums für Land- und Forstwirtschaft, Umwelt- und Wasserwirtschaft*.
- Nather, J., & Holzer, K. 1979. Über die Bedeutung und die Anlage von Kontrollflächen zur Prüfung von anerkanntem Fichtenpflanzgut. *Informationsdienst Forstliche Bundesversuchsanstalt Wien* **181**.
- Rehfeldt, G. E., Tchebakova, N. M., Parfenova, Y. I., Wykoff, W. R., Kuzmina, N. a., & Milyutin, L. I. 2002. Intraspecific responses to climate in *Pinus sylvestris*. *Global Change Biology* **8**: 912-929.
- Savolainen, O., Bokma, F., Knürr, T., Kärkkäinen, K., Pyhäjärvi, T., & Wachowiak, W. 2007. Adaptation of forest trees to climate change. *Climate change and forest genetic diversity: Implications for sustainable forest management in Europe. Bioversity International, Rome, Italy*: 19–30.
- Schmidt-Vogt, H. 1972. Studien zur morphologischen Variabilität der Fichte (*Picea abies* (L.) Karst.) – 2. Untersuchungen zur morphologischen Variabilität der Fichte im europäischen Verbreitungsgebiet. *Allgemeine Forst und Jagdzeitung* **143**: 177-186.
- Schröder, H., Andersen, H., & Kiehl, K. 2005. Rejecting the mean: Estimating the response of fen plant species to environmental factors by non-linear quantile regression. *Journal of Vegetation Science* **16**: 373–382.
- Thomson, J., Weiblen, G., Thomson, B., Alfaro, S., & P. 1996. Untangling multiple factors in spatial distributions: lilies, gophers, and rocks. *Ecology* **77**: 1698-1715.
- Wang, T., Hamann, A., Yanchuk, A., O'Neill, G. A., & Aitken, S. N. 2006. Use of response functions in selecting lodgepole pine populations for future climates. *Global Change Biology* **12**: 2404-2416.
- Zimmermann, N., Bolliger, J., Gehrig-Fasel, J., Guisan, A., Kienast, F., Lischke, H., Rickebusch, S., & Wohlgemuth, T. 2006. Wo wachsen die Bäume in 100 Jahren. In *Wald und Klimawandel. Forum für Wissen 2006*: 63–71.

StartClim2009.C

- Currie, W.S., Nadelhoffer, K.J., 1999. Dynamic redistribution of isotopically labeled cohorts of nitrogen inputs in two temperate forests. *Ecosystems* **2**, 4-18.
- Currie, W.S., Nadelhoffer, K.J., Aber, J.D., 1999. Soil detrital processes controlling the movement of ¹⁵N tracers to forest vegetation. *Ecological Applications* **9**, 87-102.
- Formayer H., Haas P., 2010. Klimaszenarien. In: Endbericht „KlimAdapt“ – Ableitung von prioritären Maßnahmen zur Adaption des Energiesystems an den Klimawandel. Wien.
- Jacob, D., Göttel, H., Kotlarski, S., Lorenz, P., Sieck, K. 2008 Klimaauswirkungen und Anpassung in Deutschland Phase 1: Erstellung regionaler Klimaszenarien für Deutschland. Umweltbundesamt.

Kilian, W., Müller, F., Starlinger, F., 1994. Die forstlichen Wuchsgebiete Österreichs. Eine Naturraumgliederung nach waldökologischen Gesichtspunkten. Wien: Forstliche Bundesversuchsanstalt.

Landsberg, J. J., Waring, R. H. 1997. A generalized model of forest productivity using simplified concepts of radiation-use efficiency, carbon balance and partitioning. *Forest Ecology and Management*. 95, 209–228.

Lexer, M. J., Hönninger, K. 2001. A modified 3D-patch model for spatially explicit simulation of vegetation composition in heterogeneous landscapes. *Forest Ecology and Management*. 144, 43–65.

Lexer, M. J., Hönninger, K., Scheifinger, H., Matulla, Ch., Groll, N., Kromp-Kolb, H., Schadauer, K., Starlinger, F., Englisch, M. 2002. The sensitivity of Austrian forests to scenarios of climate change: a large scale risk assessment based on a modified gap model and forest inventory data. *Forest Ecology and Management*. 162, 53-72.

Lexer, M. J., Seidl, R. 2009. Addressing biodiversity in a stakeholder –driven climate change vulnerability assessment of forest management. *Forest Ecology and Management*.

R Development Core Team, 2007. R: A language and environment for statistical computing. R Foundation for Statistical Computing, Vienna, Austria. ISBN 3-900051-07-0, URL <http://www.R-project.org>.

Seidl, R., Lexer, M.J., Jäger, D., Hönninger, K. 2005. Evaluating the accuracy and generality of a hybrid patch model. *Tree Physiology*. 25, 939-951.

Seidl, R., Rammer, W., Jäger, D. & Lexer, M.J. 2008. Impact of bark beetle (*Ips typographus* L.) disturbance on timber production and carbon sequestration in different management strategies under climate change. *Forest Ecology and Management*. 256, 209–220.

Seidl, R., Rammer, W., Lexer, M.J. 2009. Schätzung von Bodenmerkmalen und Modellparametern für die Waldökosystemsimulation auf Basis einer Großrauminventur. *Allgemeine Forst- und Jagdzeitung*. 180, 35-44.

Seidl, R., 2009b. Anpassung an den Klimawandel. *Österreichische Forstzeitung*. 7-2009

Seidl, R., Rammer, W. and Lexer, M.J. 2010. Climate change vulnerability of sustainable forest management in the Eastern Alps. *Clim. Change*, in press DOI 10.1007/s10584-010-9899-1.

Weinfurter P (2004) *Waldbauhandbuch. Eine Orientierungshilfe für die Praxis*. Österreichische Bundesforste AG, Purkersdorf

StartClim2009.D

AUTORENKOLLEKTIV (1977): Empfehlungen zur effektiven Versorgung der Böden mit organischer Substanz. Hrsg.: Akademie der Landwirtschaftswissenschaften d. DDR. Agrabuch, Leipzig 6.

CAPRIEL P., RIPPEL R. (2007): Humusbilanz für Beratung in Bayern. <http://www.lfl.bayern.de/iab/bodenschutz/12458/>

DIN ISO 11272 (2001): Bestimmung der Trockenrohddichte. Beuth Verlag GmbH, Berlin.

ERHART E., FEICHTINGER F., HARTL W. (2007): Nitrogen leaching losses under crops fertilized with biowaste compost compared with mineral fertilization. *J. Plant Nutr. Soil Sci*. 170, 608-614.

- ERHART E., HARTL W., PUTZ B. (2005): Biowaste compost affects yield, nitrogen supply during the vegetation period and crop quality of agricultural crops. *Europ. J. Agron.* 23, 305-314.
- HARTL W., ERHART E. (2005): Crop nitrogen recovery and soil nitrogen dynamics in a 10-year field experiment with biowaste compost. *J. Plant Nutr. Soil Sci.* 168, 781-788.
- HUDSON B. D. (1994): Soil organic matter and available water capacity. *J. Soil and Water Cons.* 49, 189-194.
- HÜLSBERGEN K.-J. (2003): Entwicklung und Anwendung eines Bilanzierungsmodells zur Bewertung der Nachhaltigkeit landwirtschaftlicher Systeme. Shaker Verlag, Aachen.
- HÜLSBERGEN K.-J. (2009): Möglichkeiten der C-Sequestrierung landwirtschaftlich genutzter Böden. In: Ökoregion Kaindorf (Hrsg.): Tagungsband Humus Symposium 2009. 23.-24. 9. 2009, Ökoregion Kaindorf, Stmk.
- KOLBE H. (2007): Einfache Methode zur standortangepassten Humusbilanzierung von Ackerland unterschiedlicher Anbauintensität. In: ZIKELI S., CLAUPEIN W., DABBERT S., KAUFMANN B., MÜLLER T., VALLE ZÁRATE A. (Hrsg.): Zwischen Tradition und Globalisierung. Beiträge zur 9. Wissenschaftstagung Ökologischer Landbau. pp. 5-8. Verlag Dr. Köster, Berlin.
- LAL R. (2004): Soil carbon sequestration impacts on global climate change and food security. *Science* 304, 1623-1627.
- LAL R. (2008): Carbon sequestration. *Phil. Trans. R. Soc. B.* 363, 815-830.
- LEITHOLD G., HÜLSBERGEN K.-J., MICHEL D., SCHÖNMEIER H. (1997): Humusbilanzierung - Methoden und Anwendung als Agrar-Umweltindikator. In: DEUTSCHE BUNDESSTIFTUNG UMWELT: Umweltverträgliche Pflanzenproduktion – Indikatoren, Bilanzierungsansätze und ihre Einbindung in Ökobilanzen. Initiativen zum Umweltschutz 5, pp. 43-54. Zeller Verlag, Osnabrück.
- NELSON D., SOMMERS L. (1982): Total carbon, organic carbon, and organic matter. In: PAGE A. L., MILLER R. H., KEENEY D. R. (eds.): *Methods of Soil Analysis. Part 2.* American Society of Agronomy, Soil Science Society of America, Madison, WI. pp. 539-579.
- NELSON R. E. 1982. Carbonate and Gypsum. In: PAGE A. L., MILLER R. H., KEENEY D. R. (eds.): *Methods of soil analysis. Part 2.* American Society of Agronomy, Soil Science Society of America, Madison, WI. pp. 181-197.
- PIMENTEL D., HEPPELY P., HANSON J., DOUDS D., SEIDEL R. (2005): Environmental, energetic, and economic comparisons of organic and conventional farming systems. *BioScience* 55, 573-582.
- SCHACHTSCHABEL P., BLUME H.-P., BRÜMMER G., HARTGE K. H., SCHWERTMANN U. (1998): *Lehrbuch der Bodenkunde.* 14. Aufl., Ferd. Enke Verlag, Stuttgart.
- SCHNUG E., HANEKLAUS S. (2002): Landwirtschaftliche Produktionstechnik und Infiltration von Böden – Beitrag des ökologischen Landbaus zum vorbeugenden Hochwasserschutz. *Landbauforschung Völkenrode* 52, 197-203.
- SHEPHERD M., HARRISON R., WEBB J. (2002): Managing soil organic matter – implications for soil structure on organic farms. *Soil Use and Management* 18, 284-192.
- SMITH P. (2004): Soils as carbon sinks: the global context. *Soil Use Management* 20, 212-218.

UBA (Umweltbundesamt; Hrsg., 2010): Klimaschutzbericht 2010. Reports, Bd. REP-0267. Umweltbundesamt, Wien.

VDLUFA (Hrsg., 2004): Standpunkt Humusbilanzierung. Methode zur Beurteilung und Bemessung der Humusversorgung von Ackerland. VDLUFA-Verlag, Bonn.

StartClim2009.E

Climate data sets

Brunner, Conrad U.; Steinemann, Urs; Jürg, Nipkow (Jänner 2008): Bauen, wenn das Klima wärmer wird. Herausgegeben von Bundesamt für Bauten und Logistik.

Christenson, M.; Manz, H.; Gyalistras, D. (2006): Climate warning impact on degree-days and building energy demand in Switzerland. In: Energy Conversion and Management, H. 47, S. 671–686.

Frank, Andreas; Formayer, Herbert; Seibert, Petra; Krüger, Bernd C.; Kromp-Kolb, Helga (November 2003 - Juni 2004): reclip:more - Projektjahr 1 Projektteil BOKU-Met Validierung – Sensitivitätstests. Arbeitsbericht für den Zeitraum 1.11.2003 – 30.6.2004.

Gill, Susannah (January 2004): Impacts of Climate Change on Urban Environments. Centre for Urban & Regional Ecology.

Holzer, Peter; Hammer, Renate (Jänner 2008): Sommertauglichkeit im Klimawandel. Department für Bauen und Umwelt, Donau-Universität Krems.

Jaros, Marion: Klimawandel - Anpassungsbedarf und Anpassungsstrategien für Großstädte am Beispiel Wien. Auswirkungen des Klimawandels auf thermischen Komfort und Energiebedarf ausgewählter Wiener Gebäude und Integration von Anpassungsstrategien in die Praxis - unter gleichzeitiger Berücksichtigung von Aspekten des Klimaschutzes. Unter Mitarbeit von Helga Kromp-Kolb, Martin Treberspurg und Andreas Muhar et al.

Krec, Klaus (2009): Das Labeling für passive Sommertauglichkeit. In: Perspektiven, H. 1_2, S. 73–74.

Krec, Klaus (2009): Klimadatengenerator. In: Perspektiven, H. 1_2, S. 65–66.

Kromp-Kolb, Helga; Jaros, Marion (2009): Klimawandelszenarien für Österreich und potenzielle Auswirkungen des Klimawandels auf den Energieverbrauch von Gebäuden. In: Perspektiven, H. 1_2, S. 70–72.

Loibl, Wolfgang; Beck, Alexander; Dorninger, Manfred; Formayer, Herbert; Gobiet, Andreas; Schöner, Wolfgang (June 2007): reclip:more. Research for Climate Protection: Model Run Evaluation.

Nicol, J. F.; Humphreys, Michael A. (2002): Adaptive thermal comfort and sustainable thermal standards for buildings. In: Energy and Buildings, H. 34, S. 563–572.

Prettenthaler, Franz: Heizen und Kühlen im Klimawandel. Joanneum Research und Wegener Zentrum; Graz.

Schneider, Andrea (April 2010): Klimawandel zukunftsfähig gestalten. Impact of climate change on thermal comfort in buildings. Veranstaltung vom April 2010, aus der Reihe "Workshop Kassel, Thermal comfort and Urban Design". Kassel, Germany.

Sample Buildings Constructive Configuration & Conditioning

Brunner, Conrad U.; Steinemann, Urs; Jürg, Nipkow (Jänner 2008): Bauen, wenn das Klima wärmer wird. Herausgegeben von Bundesamt für Bauten und Logistik.

Christenson, M.; Manz, H.; Gyalistras, D. (2006): Climate warning impact on degree-days and building energy demand in Switzerland. In: Energy Conversion and Management, H. 47, S. 671–686.

Frank, Andreas; Formayer, Herbert; Seibert, Petra; Krüger, Bernd C.; Kromp-Kolb, Helga (November 2003 - Juni 2004): reclip:more - Projektjahr 1 Projektteil BOKU-Met Validierung – Sensitivitätstests. Arbeitsbericht für den Zeitraum 1.11.2003 – 30.6.2004.

Gill, Susannah (January 2004): Impacts of Climate Change on Urban Environments. Centre for Urban & Regional Ecology.

Holzer, Peter; Hammer, Renate (Jänner 2008): Sommertauglichkeit im Klimawandel. Department für Bauen und Umwelt, Donau-Universität Krems.

Jaros, Marion: Klimawandel - Anpassungsbedarf und Anpassungsstrategien für Großstädte am Beispiel Wien. Auswirkungen des Klimawandels auf thermischen Komfort und Energiebedarf ausgewählter Wiener Gebäude und Integration von Anpassungsstrategien in die Praxis - unter gleichzeitiger Berücksichtigung von Aspekten des Klimaschutzes. Unter Mitarbeit von Helga Kromp-Kolb, Martin Treberspurg und Andreas Muhar et al.

Krec, Klaus (2009): Das Labeling für passive Sommertauglichkeit. In: Perspektiven, H. 1_2, S. 73–74.

Krec, Klaus (2009): Klimadatengenerator. In: Perspektiven, H. 1_2, S. 65–66.

Kromp-Kolb, Helga; Jaros, Marion (2009): Klimawandelszenarien für Österreich und potenzielle Auswirkungen des Klimawandels auf den Energieverbrauch von Gebäuden. In: Perspektiven, H. 1_2, S. 70–72.

Loibl, Wolfgang; Beck, Alexander; Dorninger, Manfred; Formayer, Herbert; Gobiet, Andreas; Schöner, Wolfgang (June 2007): reclip:more. Research for Climate Protection: Model Run Evaluation.

Nicol, J. F.; Humphreys, Michael A. (2002): Adaptive thermal comfort and sustainable thermal standards for buildings. In: Energy and Buildings, H. 34, S. 563–572.

Prettenthaler, Franz: Heizen und Kühlen im Klimawandel. Joanneum Research und Wegener Zentrum; Graz.

Schneider, Andrea (April 2010): Klimawandel zukunftsfähig gestalten. Impact of climate change on thermal comfort in buildings. Veranstaltung vom April 2010, aus der Reihe "Workshop Kassel, Thermal comfort and Urban Design". Kassel, Germany.

Internal Loads

Biermayr, Peter; Schriefl, Ernst; Baumann, Bernhard; Sturm, Ansbart (Mai 2004): Maßnahmen zur Minimierung von Reboundeffekten bei der Sanierung von Wohngebäuden (MARE-SI). Herausgegeben von Innovation und Technologie Bundesministerium für Verkehr. Energie- und Umweltforschung 6.

Fördergemeinschaft Gutes Licht (Hg.): Tageslicht und künstliche Beleuchtung. Unter Mitarbeit von Fachverband Tageslicht und Rauchschutz. licht.forum 53.

Hofer, G.; Belazzi, Thomas; Dungal, Leopold; Kranzl, Sabine; Lang, Gerhard; Lipp, Bernhard; Stefanson, Astrid (Juli 2006): LCC-ECO - Ganzheitliche ökologische und energetische Sanierung von Dienstleistungsgebäuden. Herausgegeben von Innovation und Technologie Bundesministerium für Verkehr. Energie- und Umweltforschung 53.

Kallmann, Kerstin; Paar, Angelika (Jänner 2007): GREENBUILDING - Technischer Leitfaden für die Gebäudehülle. Das EU-Programm zur Verbesserung der Energieeffizienz und zur Integration erneuerbarer Energieträger in Gebäuden. Austrian Energy Agency. Wien.

Knissel, Jens (Oktober 2002): Energieeffiziente Bürogebäude mit reduzierten internen Wärmequellen und Wärmeschutz auf Passivhausniveau. Betreut von Bartsch und Fitzner. Berlin. Technische Universität Wien, Fakultät III - Prozesswissenschaften.

Lorbek, Maja; Stosch, Gerhild (August 2003): Architekturhistorisch differenzierte, energetische Sanierung. Vergleichende Analyse von Sanierungsmethoden bei Bauten der Nachkriegsmoderne, exemplarisch durchgeführt am Objekt Sonderschule Floridsdorf. Herausgegeben von Innovation und Technologie Bundesministerium für Verkehr, Energie- und Umweltforschung 28.

Lorbek, Maja; Stosch, Gerhild; Größinger, Alice; Nageler-Reidlinger, Astrid; Bittner, Irene (Juni 2005): Katalog der Modernisierung. Fassaden- und Freiflächenmodernisierung mit standardisierten Elementen bei Geschosswohnbauten der fünfziger und sechziger Jahre. Herausgegeben von Innovation und Technologie Bundesministerium für Verkehr, Energie- und Umweltforschung 15.

Österreichisches Forschungs- und Prüfzentrum Arsenal: Mehr Energieeffizienz für Glasfassaden in der Architektur. Herausgegeben von EU-Strategie und Wirtschaftsentwicklung MA 27.

Petrie, Thomas W.; Atchley, Jerald A.; Childs, Phillip W.; Desjarlais, André O.: Effect of Solar Radiation Control on Energy Costs – A Radiation Control Fact Sheet for Low-Slope Roofs (with post-publication corrections to Table 4 and Figure 4). Buildings Technology Center, Oak Ridge National Laboratory.

Plessner, Stefan (Februar 2009): EnBop - Energetische Betriebsoptimierung. Qualitätssicherung am Beispiel der Wärme- und Kältespeicherung im Gründungsbereich von Bürogebäuden. Veranstaltung vom Februar 2009, aus der Reihe "World Sustainable Energy Days". Wels, Austria.

Zelger, Thomas; Heisinger, Felix (Mai 2010): Aktueller Stand des ermittelten energieeffizienten Büro-Standards / Passivhausstandards. Österreichisches Institut für Baubiologie und –ökologie GmbH.

Usage Profiles

Fraunhofer Institut für Arbeitswirtschaft und Organisation (IAO) (Hg.). (2003): Mehr Leistung in innovativen Arbeitswelten. Innovationsoffensive OFFICE 21®. Stuttgart.

Horx, Matthias (Oktober 2004): Smart Work! about the work world of the future. Koelnmesse GmbH / ORGATEC.

Voss, K.; Herkel, S.; Löhnert, G.; Wagner, A. (2005): Bürogebäude mit Zukunft. Erfahrungen mit innovativen Bürogebäuden. Wambsgang, M. (Hg.). Köln: TÜV - Verlag.

Natural Ventilation

Allard, Francis; Santamouris, Mat; Alvarez, Servando (2002): Natural ventilation in buildings. A design handbook. Reprint. London: James & James.

Allocca, Camille; Chen, Qingyan; Glicksman, Leon R. (2008): Design analysis of single-sided natural ventilation. In: Energy and Buildings, H. 35, S. 785–795.

Aynsley, R. M.; Melbourne, W.; Vickery, B. J. (1977): Architectural aerodynamics. London.

Barton, Mark; Oke, T. R. (August 2000): Tests of the performance of an algorithmic scheme of the hourly urban heat island. Veranstaltung vom August 2000. Third Symposium on the Urban Environment.

Bastide, Alain; Lucas, Franck; Boyer, Harry (August 2005): Impact of the atmospheric boundary layer profile on the ventilation of a cubic building with two large opposite openings. Veranstaltung vom August 2005. Montreal, Canada. Veranstalter: Ninth International IBPSA Conference.

Cashman, Jason (Juli 2006): Natural Ventilation Proposals for Springfield Special School.

Cavelius, Ralf; Isaksson, Charlotta; Perednis, Eugenijus; Read, Graham: Keep Cool - Technology description - "Night Ventilation (mechanical and natural)". Wien.

Davenport, Alan G.; Grimmond, C. Sue B.; Oke, Tim R.; Wieringa, Jon (2000): Estimating the roughness of cities and sheltered country. Herausgegeben von American Meteorological Society.

Geros, V.; Santamouris, M.; Karatasou, S.; Tsangrassoulis, A.; Papanikolaou, N. (2005): On the cooling potential of night ventilation techniques in the urban environment. In: Energy and Buildings, H. 37, S. 243–257.

Ghiaus, C.; Allard, F.; Santamouris, M.; Georgakis, C. (May 2005): Natural ventilation of urban buildings – summary of URBVENT project. International Conference “Passive and Low Energy Cooling for the Built Environment”, Santorini, Greece.

Ghiaus, Cristian; Allard, Francis (2007): Natural ventilation in the urban environment. Assessment and design. Reprint. London: Earthscan (Buildings, energy, solar technology).

Gids, W. F. de (May 2002): Methods for Vent Sizing in the pre design stage. Results of WG A2. Building and Construction Research.

Heiselberg, Per; Tjelflaat, Per Olaf (1999): Design Procedure for Hybrid Ventilation. Sydney, Australia.

Hunt, G. R.; Linden, P. F. (1999): The fluid mechanics of natural ventilation - displacement ventilation by buoyancy-driven flows assisted by wind. In: Building and Environment, H. 34, S. 707–720.

Jesus, Amando P de: Green architecture in Asia. ASEAN energy efficiency and conservation best practices competition in buildings.

Matzarakis, Andreas (Juli 2001): Die thermischen Komponente des Stadtklimas. Habilitation. Betreut von Helmut Mayer. Freiburg. Universität Freiburg, Meteorologisches Institut der Universität Freiburg.

Mursch-Radlgruber, Erich; Trimmel, Heideline (April 2009): Studie "Räumlich und zeitlich hochaufgelöste Temperaturszenarien für Wien und ausgewählte Analysen bezüglich Adaptionsstrategien. "Räumliche Differenzierung der mikroklimatischen Eigenschaften von Wiener Stadtstrukturen und Anpassungsmaßnahmen. Institut für Meteorologie, Department Wasser-Atmosphäre-Umwelt, Universität für Bodenkultur Wien.

Oke, T. R.: An algorithmic scheme to estimate hourly heat island magnitude. University of British Columbia, Vancouver, Canada. 2nd Urban Environment Symposium.

Pfafferott, Jens; Herkel, Sebastian; Jäschke, Martina (2003): Design of passive cooling by night ventilation: evaluation of a parametric model and building simulation with measurements. In: Energy and Buildings, H. 35, S. 1129–1143.

Richard de Dear (1999): Adaptive Thermal Comfort in Natural and Hybrid Ventilation. Sydney, Australia.

Rowe, David; Dinh, Cong Truc (09/1999): Experience with Occupant Control of Supplementary Cooling in a Naturally Ventilated Environment: Some Preliminary Results from Work in Progress. Sydney, Australia.

Seppänen, Olli; Fisk, William J; Faulkner, David: Cost benefit analysis of the night-time ventilative cooling in office building.

Straw, Matthew Peter: Computation and measurement of wind induced ventilation. Formation of delta-wing vortices over roof with flow skewed to orientation of structure.

Wagner, Andreas (2008): Energieeffiziente Fenster und Verglasungen. Informationspaket. 3., vollst. überarb. Aufl., unveränd. Nachdr. Berlin: Solarpraxis.

StartClim2009.F

Aleotti, P. und Chowdhury R. (1999): Landslide hazard assessment: summary review and new perspectives. *Bull. Eng. Geol. Environ.* 58, 21-44.

Auer, I., Böhm, R., Leymüller, M. und Schöner, W. (2002): Das Klima des Sonnblicks. *Österr. Beitr. Z. Meteorologie u. Geophysik* 28, Wien, 304 S.

Auer, I. et al. (2007): HISTALP – Historical instrumental climatological surface time series of the greater Alpine region 1760-2003. *Internat. Journal of Climatology* 27, 17-46.

Braun, F. (2009): Sommer-Bergtourismus im Klimawandel: Szenarien und Handlungsbedarf am Beispiel des hochalpinen Wegenetzes. Unpubl. Diss., Univ. f. Bodenkultur, Wien, 142 S.

BUWAL, Bundesamt für Umwelt, Wald und Landschaft et al. (Hrsg.) (2001): Berücksichtigung der Massenbewegungsgefahren bei raumwirksamen Tätigkeiten – Empfehlungen 1997. Bern 42 S.

http://www.bafu.admin.ch/naturgefahren/01923/01952/index.html?lang=de&download=NHZLpZeg7t,Inp6l0NTU042l2Z6ln1acy4Zn4Z2qZpnO2YUq2Z6gpJCEdIJ5fmym162epYbg2c_JjKbNoKSn6A-- (Zugriff 10/2010)

Corominas, J., Remondo, J., Farias, P., Estevano, M., Zézere, J., Días de Terán, J., Dikau, R., Schrott, L., Moya, J. und González, A. (1996): Debris Flow. In: Dikau, R., Brunsden, D., Schrott, L. und Ibsen, M.L. (Hrsg.): *Landslide Recognition: Identification, Movement and Courses*. John Wiley & Sons Ltd, Chichester, 161-180.

Christensen, O. B. und Christensen, J. H. (2004): Intensification of extreme European summer precipitation in a warmer climate. *Global Planet Change* 44, 107–117.

Dorren, L.K.A. und Seijmonsbergen, A.C. (2003): Comparison of three GIS-based models for predicting rockfall runout zones at a regional scale. *Geomorphology* 56, 49-64.

Evans, S. G. und Clague, J. J. (1994): Recent climatic change and catastrophic geomorphic processes in mountain environments. *Geomorphology* 10, 107–128.

Felgentreff, C. und Glade, T. (Hrsg.) (2008): *Naturrisiken und Sozialkatastrophen*. Spektrum Akademischer Verlag, Berlin, Heidelberg, 454 S.

Fey, C. (2010): Modellierung von Steinschlag, Blockschlag und Felsstürzen auf alpinen Bergwegen – Kalibrierung und Anwendung von Sturzmodellierungsprogrammen zur sichereren Gestaltung des Hüttenzustiegweges zur Winnebachseehütte in Tirol. Unpubl. Diplomarbeit am Institut für Geographie, Universität Heidelberg, 125 S.

Frauenfelder, R., Haeberli, W., Hoelzle, M. und Maisch, M. (2001): Using relict rockglaciers in GIS-based modelling to reconstruct younger dryas permafrost distribution patterns in the Err-Julier area, Swiss Alps. *Norwegian Journal of Geography* 55/4, 195–202.

Gamma, P (2000): Dfwalk – Ein Murgang-Simulationsprogramm zur Gefahrenzonierung. *Geographica Bernensia* 66, Univ. Bern, Bern, 144 S.

Gärtner, H., Stoffel, M., Lièvre, I., Conus, D., Grichting, M. und Monbaron, M. (2003): Debris flow frequency derived from tree-ring analyses and geomorphic mapping, Valais, Switzerland. In: Chen, R. (Hrg): *Debris flow hazards mitigation*. Millpress, Rotterdam, 207–217.

Geitner, C. et al. (2010): Flachgründiger Abtrag auf Wiesen- und Weideflächen in den Alpen (Blaiken) – Wissensstand, Datenbasis und Forschungsbedarf. *Mitteilung der Österr. Gesellschaft*, 152 (in Druck).

Gobiet, A. und Truhetz, H. (2008): Klimamodelle, Klimaszenarien und ihre Bedeutung für Österreich. – In: Böhm, R., Godina, R., Nachtnebel, H.P. Pirker, O. (Hrsg.): Auswirkungen des Klimawandels auf die österreichische Wasserwirtschaft. Bundesministerium für Land- und Forstwirtschaft, Umwelt und Wasserwirtschaft und Österreichischer Wasser- und Abfallwirtschaftsverband (ÖWAV), Wien, 71-82.

Gruber, S., Peter, M., Hoelzle, M., Woodhatch, I. und Haeberli, W. (2003): Surface temperatures in steep alpine rock faces – a strategy for regional-scale measurement and modelling. In: Phillips, M., Springman, S. und Arenson, L. (Hrsg.): 8th International Conference on Permafrost, Zurich 2003, Proceedings, 325-330.

Gruber, S., King, L., Kohl, T., Herz, T., Haeberli, W. und Hoelzle, M. (2004): Interpretation of geothermal profiles perturbed by topography: the Alpine permafrost boreholes at Stockhorn Plateau, Switzerland. *Permafrost and Periglacial Processes* 15/4, 349-357.

Gruber, S. (2007): A mass-conserving fast algorithm to parameterize gravitational transport and deposition using digital elevation models. *Water Resour. Res.*, 43, W06412. doi:10.1029/2006WR004868.

Gruner, U. (2008): Klimatische und meteorologische Einflüsse auf Sturzprozesse. INTERPRAEVENT 2008 – Conference Proceedings, Vol. 2., 147-158.

Harris, C., Arenson, L.U., Christiansen, H.H., Etzelmüller, B., Frauenfelder, R., Gruber, S., Haeberli, W., Hauck, C., Hölzle, M., Humlum, O., Isaksen, K., Kääh, A., Kern-Lütschg, M.A., Lehning, M., Matsuoka, N., Murton, J.B., Nötzli, J., Phillips, M., Ross, N., Seppälä, M., Springman, S.M. und Mühl, D.V. (2009): Permafrost and climate in Europe: Monitoring and modelling thermal, geomorphological and geotechnical responses. – *Earth-Science Reviews* 92, 117-171.

IPCC (2007)^a: Summary for Policymakers. In: *Climate Change 2007: The Physical Science Basis. Contribution of Working Group I to the Fourth Assessment Report of the Intergovernmental Panel on Climate Change*. Cambridge University Press, Cambridge, United Kingdom and New York, NY, USA.

IPCC (2007)^b: *Climate Change 2007: Synthesis Report*. 52 S. IPCC: http://www.ipcc.ch/pdf/assessment-report/ar4/syr/ar4_syr.pdf (Zugriff 10/2010).

Jäger, S. (1997): Fallstudien zur Bewertung von Massenbewegungen als geomorphologische Naturgefahr. *Heidelberger Geographische Arbeiten* 108, 151 S.

Jomelli, V., Brunstein, D., Grancher, D. und Pech, P. (2007): Is the response of hill slope debris flows to recent climate change univocal? A case study in the Massif des Ecrins (French Alps). *Climate Change* 85, 119-137.

Keller, F. (1992): Automated mapping of mountain permafrost using the program PERMAKART within the Geographical Information System ARC/INFO. *Permafrost and Periglacial Processes* 3, 133-138.

Kellerer-Pirklbauer, A. (2001): GIS-gestützte Analyse der Murgangdisposition im Einzugsgebiet des Ennslingbaches bei Haus im Ennstal. Unpubl. Diplomarbeit, Karl-Franzens-Universität Graz, 156 S.

Kellerer-Pirklbauer A. und Mitglieder des PermaNET Teams (2009): Assessment of the thermal and dynamic reaction scenarios of different permafrost typologies in the European Alps: A PermaNET initiative. *Geophysical Research Abstracts*, 11, EGU2009-7990-1.

Leser, H. (2009): Geomorphologie. Das Geographische Seminar, Westermann, Braunschweig, 400 S.

Lieb, G.K. (1998): High-mountain permafrost in the Austrian Alps (Europe). Proceedings of the 7th International Conference on Permafrost, Yellowknife, Canada, 663-668.

Lieb, G.K. (2007): Vom Klimawandel beeinflusste Naturprozesse im Hochgebirge als potenzielle Gefahren für Freizeitaktivitäten – qualitative Überlegungen mit Beispielen aus den Hohen Tauern. Geographischer Jahresbericht aus Österreich LXII/LXIII, 79-94.

Lieb, G.K., Kellner-Pirklbauer, A. und Avian, M. (2007): Preliminary Map of Geomorphological Hazards caused by Climate Change in the Großglockner Mountains (Austria). Geomorphology for the Future – Conference Proceedings, Innsbruck University Press, Innsbruck, 137-144.

Loye, A., Jaboyedoff, M. und Pedrazzini A. (2009): Identification of potential rockfall source areas at a regional scale using a DEM-based geomorphometric analysis. Natural Hazards and Earth System Sciences 9, 1643-1653.

Mark, R. K. und Ellen, S. D. (1995): Statistical and simulation models for mapping debris-flow hazard. In: Carrara, A. und Guzzetti, F. (Hrsg.): Geographical Information System in Assessing Natural Hazards 5, 93-106.

Marquinez, J., Menéndez Duarte, R., Farias, P., und Juménez Sánchez, M. (2003): Predictive GIS-based Model of Rockfall Activity in Mountain Cliffs. Natural Hazards 30, 341-360.

Meißl, G. (1998): Modellierung der Reichweite von Felsstürzen. Fallbeispiele zur GIS-gestützten Gefahrenbeurteilung aus dem bayrischen und Tiroler Alpenraum. Selbstverlag d. Inst. für Geographie d. Univ. Innsbruck, Innsbrucker Geographische Studien 28, 249 S.

Nötzli, J., Gruber, S. und Hölzle, M. (2004): Permafrost und Felsstürze im Hitzesommer 2003. GEOForum aktuell 20, 11-14.

Patula, S. (2009): Erweiterte Gefahrenhinweiskarte und Risikohinweiskarte für Steinschlag am Beispiel des Landkreises Miesbach und Erstellung einer Georisiko-Toolbox zur Automatisierung des Workflows. Master Thesis am Zentrum für GeoInformatik, Universität Salzburg, 113 S.

Prager, C., Zangerl, C., Patzelt, G. und Brandner, R. (2008): Age distribution of fossil landslides in the Tyrol (Austria) and its surrounding areas. Natural Hazards and Earth System Sciences 8/2, 377-407.

Pröbstl, U., Damm, B., Rid, W., Mau, P., Felber, A., Swoa, M. und Pichler, I. (2009): Wahrnehmung und Bewertung von Naturgefahren als Folge von Gletscherschwund und Permafrostdegradation in Tourismusdestinationen am Beispiel des Tuxer Tals (Zillertaler Alpen/Österreich). Enderbericht von StartClim2008.F in StartClim2008: Anpassung an den Klimawandel in Österreich: Beiträge zur Erstellung einer Anpassungsstrategie für Österreich, Auftraggeber: BMLFUW, BMWF, BMWFJ, ÖBF, 51 S. <http://www.austroclim.at/startclim/>

Posch-Trözmüller, G. (2010): Hazard Mapping – Geological hazards. Literature survey regarding methods of hazard mapping and evaluation of danger by landslides and rock fall. – GBA, AdaptAlp WP 5.1, Final report, 278 S.

Amt der Kärntner Landesregierung, Zugriff 10/2010: http://www.ktn.gv.at/197395_DE-.pdf

Rickenmann, D. (1991): Hyperconcentrated flow and sediment transport at steep slopes. *Journal of Hydraulic Engineering* 117/11, 1419–1439.

Rieger, D. (1999): Bewertung der naturräumlichen Rahmenbedingungen für die Entstehung von Hangmuren. Möglichkeiten zur Modellierung des Murpotentials. *Münchner Geographische Abhandlungen* 51, 149 S.

Ruff, M. (2005): GIS-gestützte Risikoanalyse für Rutschungen und Felsstürze in den Ostalpen (Vorarlberg, Österreich). *Universitätsverlag Karlsruhe, Karlsruhe*, 148 S.

Stahr, A. und Hartmann, T. (1999): *Landschaftsformen und Landschaftselemente im Hochgebirge*. Springer, Berlin, Heidelberg, 398 S.

Stoffel, M. und Beniston, M. (2006): On the incidence of debris flows from the early Little Ice Age to a future greenhouse climate: a case study from the Swiss Alps. *Geophysical Research Letters* 33, L16404.

Strasser, U. (2008): Die Modellierung der Gebirgsschneedecke im Nationalpark Berchtesgaden. *Modelling of the mountain snow cover in the Berchtesgaden National Park, Berchtesgaden National Park Research Report* 55, 184 S.

Taucher, W. (2010): Climatic conditions of six selected sites in the Hohe and Niedere Tauern Range 1961-2006. Unpubl. Diplomarbeit, Universität Graz, 156 S.

Tebaldi, C., Hayhoe, K., Arblaster, J. M. und Meehl, G. A. (2006): Going to the extremes: an intercomparison of model-simulated historical and future changes in extreme events. *Climate Change* 79, 185–211.

Umweltdachverband (Hrsg.) (2006): *Auswirkungen der Klima- und Gletscheränderung auf den Alpinismus*. text.um 1/06, Wien, 96 S.

Wakonigg, H. und Lieb, G. K. (1996): Die Pasterze und ihre Erforschung im Rahmen der Gletschermessungen. *Kärntner Nationalpark-Schriften* 8, Großkirchheim, 99-115.

Whalley, W. B. (1984): Rockfalls. In: Brunsden, D. und Prior, D. B. (Hrsg.): *Slope Instability*. Wiley, Chichester, 217-256.

Wichmann, V. (2006): Modellierung geomorphologischer Prozesse in einem alpinen Einzugsgebiet. Abgrenzung und Klassifikation der Wirkungsräume von Sturzprozessen und Muren mit einem GIS. *Profil Verlag, München/Wien, Eichstätter Geographische Arbeiten* 15, 231 S.

Zangerl, C., Prager C., Brandner, R., Brückl, E., Eder, S., Fellin, W., Tentschert, E., Poscher, G. und Schönlaub, H. (2008): *Methodischer Leitfaden zur prozessorientierten Bearbeitung von Massenbewegungen*. *Geo.Alp* 5, 1-51.

Zentralanstalt für Meteorologie und Geodynamik (ZAMG) (2010): *Excel-Tabellen mit Bohrlochmessdaten*. Persönliche Korrespondenz (Juni, 2010).

Zimmermann, M., Mani, P., Gamma, P., Gsteiger, P., Heiniger, O. und Hunziker, G. (1997): *Murganggefahr und Klimaänderung – ein GIS-basierter Ansatz*. Zürich, vdf, Hochsch.-Verlag an der ETH, 161 S.

Zimmermann, M. und Haerberli, W. (1992): Climatic Change and Debris Flow Activity in High-Mountain Areas - A Case Study in the Swiss Alps, *Catena Suppl.* 22, 59–72.

Annex

All following reports can be found on the StartClim2009-CD-ROM and on the StartClim website (www.austroclim.at/startclim/)

Subprojects of StartClim2003

StartClim.1: Quality control and statistical characteristics of selected climate parameters on the basis of daily values in the face of extreme value analysis

Central Institute of Meteorology and Geodynamics
Wolfgang Schöner, Ingeborg Auer, Reinhard Böhm, Sabina Thaler

StartClim.2: Analysis of the representativeness of a data collected over a span of fifty years for the description of the variability of climatic extremes

Central Institute of Meteorology and Geodynamics
Ingeborg Auer, Reinhard Böhm, Eva Korus, Wolfgang Schöner

StartClim.3a: Extreme events: documentation of hazardous events in Austria such as rock avalanches, floods, debris flows, landslides, and avalanches

Institute of Forest and Mountain-Risk Engineering, BOKU
Dieter Rickenmann, Egon Ganahl

StartClim.3b: Documentation of the impact of extreme weather events on agricultural production ARC Seibersdorf research: Gerhard Soja, Anna-Maria Soja

StartClim.3c: Meteorological extreme event data information system for the eastern Alpine region - MEDEA

Federal Environment Agency, Martin König, Herbert Schentz, Johann Weigl
IIASA, Mathias Jonas, Tatiana Ermolieva

StartClim.4: Development of a method to predict the occurrence of extreme events from large-scale meteorological fields

Institute of Meteorology and Physics, BOKU Andreas Frank, Petra Seibert

StartClim.5: Testing statistical downscaling techniques for their applicability to extreme events in Austria

Institute of Meteorology and Physics, BOKU -
Herbert Formayer, Christoph Matulla, Patrick Haas
GKSS Forschungszentrum Geesthacht, Nikolaus Groll

StartClim.6: Adaptation strategies for economic sectors affected heavily by extreme weather events: economic evaluation and policy options

Austrian Humans Dimensions Programme (HDP-A)
Department of Economics, Karl-Franzens-Universität Graz
Karl Steininger, Christian Steinreiber, Constanze Binder, Erik Schaffer
Eva Tusini, Evelyne Wiesinger

StartClim.7: Changes in the social metabolism due to the 2002-flooding in Austria: case study of an affected community

Institute of Interdisciplinary Studies of Austrian Universities (IFF)
Willi Haas, Clemens Grünbühel, Brigitt Bodingbauer

StartClim.8: Risk-management and public prosperity in the face of extreme weather events: What is the optimal mix of private insurance, public risk pooling and alternative transfer mechanisms

Department of Economics, Karl-Franzens-Universität Graz
Walter Hyll, Nadja Vettters, Franz Pretenthaler

StartClim.9: Summer 2002 floods in Austria: damage account data pool

Center of Natural Hazards and Risk Management (ZENAR),
BOKU - University of Natural Resources and Applied Life Sciences
Helmut Habersack, Helmut Fuchs

StartClim.10: Economic aspects of the 2002 floodings: data analysis, asset accounts and macroeconomic effects

Austrian Institute of Economic Research (WIFO)
Daniela Kletzan, Angela Köppl, Kurt Kratena

StartClim.11: Communication at the interface science - education

Institute of Meteorology and Physics,
BOKU - University of Natural Resources and Applied Life Sciences
Ingeborg Schwarzl
Institute of Interdisciplinary Studies of Austrian Universities (IFF)
Willi Haas

StartClim.12: Developing an innovative approach for the analysis of the August 2002 flood event in comparison with similar extreme events in recent years

Department of Meteorology and Geophysics, University of Vienna
Simon Tschannett, Barbara Chimani, Reinhold Steinacker

StartClim.13: High-resolution precipitation analysis

Department of Meteorology and Geophysics, University of Vienna
Stefan Schneider, Bodo Ahrens, Reinhold Steinacker, Alexander Beck

StartClim.14: Performance of meteorological forecast models during the August 2002 floods

Central Institute of Meteorology and Geodynamics
Thomas Haiden, Alexander Kann

StartClim.C: Design of a long term climate/climate-impact research programme for Austria

Institute of Meteorology and Physics, BOKU:
Helga Kromp-Kolb, Andreas Türk

StartClim.Reference database:

Implementation of a comprehensive literature database on climate and climate impact research as a generally accessible basis for future climate research activities

Institute of Meteorology and Physics,
University of Natural Resources and Applied Life Sciences
Patrick Haas

Subprojects of StartClim2004

StartClim2004.A: Analysis of heat and drought periods in Austria: extension of the daily StartClim data record by the element vapour pressure

Central Institute of Meteorology and Geodynamics
Ingeborg Auer, Eva Korus, Reinhard Böhm, Wolfgang Schöner

StartClim2004.B: Investigation of regional climate change scenarios with respect to heat waves and dry spells in Austria

Institute of Meteorology, BOKU: Herbert Formayer, Petra Seibert, Andreas Frank, Christoph Matulla, Patrick Haas

StartClim2004.C: Analysis of the impact of the drought in 2003 on agriculture in Austria – comparison of different methods

ARC Seibersdorf research: Gerhard Soja, Anna-Maria Soja
Institute of Meteorology, BOKU: Josef Eitzinger, Grzegorz Gruszczynski, Mirek Trnka, Gerhard Kubu, Herbert Formayer
Institute of Surveying, Remote Sensing and Land Information, BOKU
Werner Schneider, Franz Suppan, Tatjana Koukal

StartClim2004.F: Continuation and further development of the MEDEA event data base

Federal Environment Agency: Martin König, Herbert Schentz,
Katharina Schleidt
IIASA: Matthias Jonas, Tatiana Ermolieva

**StartClim2004.G: “Is there a relation between heat and productivity?”
A project at the interface between science and education**

Institute of Meteorology, BOKU
Ingeborg Schwarzl, Elisabeth Lang, Erich Mursch-Radlgruber

Subprojects of StartClim2005

StartClim2005.A1a: Impacts of temperature on mortality and morbidity in Vienna

Medical University of Vienna, Centre for Public Health, Institute of Environmental Hygiene
Hanns Moshhammer, Hans-Peter Hutter
Institute of Meteorology, BOKU
Andreas Frank, Thomas Gerersdorfer
Austrian Federal Institute of Health Care
Anton Hlava, Günter Sprinzi
Statistics Austria, Barbara Leitner

StartClim2005.A1b: Nocturnal cooling under a changing climate

Institute of Meteorology, BOKU
Thomas Gerersdorfer, Andreas Frank, Herbert Formayer, Patrick Haas
Medical University of Vienna, Centre for Public Health, Institute of Environmental Hygiene
Hanns Moshhammer
Statistics Austria, Barbara Leitner

StartClim2005.A4: Impacts of meteorological extreme events on safety of drinking water supply in Austria

Institute of Sanitary Engineering and Water Pollution Control, BOKU
Reinhard Perfler, Mario Unterwainig
Institute of Meteorology, BOKU
Herbert Formayer

StartClim2005.C2: Studies on the distribution of tularaemia under the aspect of climate change

Gesellschaft für Wildtier und Lebensraum – Greßmann & Deutz OEG
Armin Deutz
HBLFA Raumberg Gumpenstein, Agricultural Research and Education Centre
Thomas Guggenberger

StartClim2005.C3a: Impacts of climate change on agricultural pests and antagonists in organic farming in Eastern Austria

Bio Forschung Austria
Bernhard Kromp, Eva Maria Grünbacher, Patrick Hann
Institute of Meteorology, BOKU
Herbert Formayer,

StartClim2005.C3b: Risk analysis of the establishment of the Western Flower Thrips (*Frankliniella occidentalis*) under outdoor conditions in Austria as a result of the climate change

The Austrian Agency für Health and Food Safety, AGES
Andreas Kahrer
Institute of Meteorology, BOKU
Herbert Formayer,

StartClim2005.C5: An allergenic neophyte and its potential spread in Austria – range dynamics of ragweed (*Ambrosia artemisiifolia*) under influence of climate change

VINCA, Vienna Institute for Nature Conservation & Analysis
Ingrid Kleinbauer, Stefan Dullinger
Federal Environment Agency
Franz Essl, Johannes Peterseil

StartClim2005.F: GIS-sustained simulation of diminishing habitats of snow grouse, black grouse, chamois and capricorn under conditions of global warming and heightening forest limits

Joanneum Research
Heinz Gallaun, Jakob Schaumberger, Mathias Schardt
HBLFA Raumberg-Gumpenstein
Thomas Guggenberger, Andreas Schaumberger, Johann Gasteiner
Gesellschaft für Wildtier und Lebensraum - Greßmann & Deutz OEG
Armin Deutz, Gunter Greßmann

Subprojects of StartClim2006

StartClim2006.A: Particulate matter and climate change – are there connections between them in north-eastern Austria?

Institute of Meteorology, BOKU: Bernd C. Krüger, Irene Schicker, Herbert Formayer
Medical University of Vienna, Centre for Public Health, Institute of Environmental Hygiene: Hanns Moshhammer

StartClim2006.B: Risk Profile for the autochthonous occurrence of Leishmania infections in Austria

Medical University of Vienna: Horst Aspöck, Julia Walchnik
Institute of Meteorology, BOKU: Thomas Gerersdorfer, Herbert Formayer

StartClim2006.C: Effects of climate change on the dispersion of white grub damages in the Austrian grassland

Bio Forschung Austria
Eva Maria Grünbacher, Patrick Hann, Claus Trska, Bernhard Kromp
Institute of Meteorology, BOKU: Herbert Formayer

StartClim2006.D1: Sensitivity of Austrian summer tourism to climate change

Institut für touristische Raumplanung: Volker Fleischhacker
Institute of Meteorology, BOKU: Herbert Formayer

StartClim2006.D2: Effects of climate change on the climatic potential of tourism

Institute of Meteorology, University of Freiburg
Andreas Matzarakis, Christina Endler, Robert Neumcke
Central Institute of Meteorology and Geodynamics
Elisabeth Koch, Ernest Rudel

StartClim2006.D3: See-Vision: influence of climate change-induced fluctuation of water level in Lake Neusiedl on the perception and behaviour of visitors and locals

Institute of Landscape Development, Recreation and Conservation Planning, BOKU
Ulrike Pröbstl, Alexandra Jiricka, Thomas Schuppenlehner
Simon Fraser University, Burnaby, Canada
Wolfgang Haider

StartClim2006.F: Climate change impacts on energy use for space heating and cooling in Austria

Institute of Technology and Regional Policy, Joanneum Research (1);
Wegener Center for Climate and Global Change, University of Graz (2);
Institute for Geophysics, Astrophysics and Meteorology,
University of Graz (3);
Institute for Meteorology and Geophysics, University of Vienna (4);
Institute of Energy Research, Joanneum Research (5)
Franz Pretenthaler^{1,2}, Andreas Gobiet^{2,3},
Clemens Habsburg-Lothringen¹, Reinhold Steinacker⁴,
Christoph Töglhofer², Andreas Türk^{2,5}

Subprojects of StartClim2007

StartClim2007.A: Enlargement and completion of the StartClim dataset for the element daily snow depth. Update of the already existing StartClim datasets (air temperature, precipitation and vapour pressure) until April 2007

Central Institute of Meteorology and Geodynamics: Ingeborg Auer,
Anita Jurković, Reinhard Böhm, Wolfgang Schöner, Wolfgang Lipa

StartClim2007.B: Health risks for the Austrian population due to the depletion of stratospheric ozone

Institute of Meteorology, University of Natural Resources and Applied Life Sciences, Vienna: Stana Simic
Institute of Medical Physics and Biostatistics, University of Veterinary Medicine Vienna: Alois W. Schmalwieser
Medical University of Vienna, Centre for Public Health, Institute of Environmental Hygiene: Hanns Moshhammer

StartClim2007.C: Adaptations of insect pests to climate change in crop production of eastern Austria: conception of a long-term monitoring system

Bio Forschung Austria: Eva-Maria Grünbacher, Patrick Hann, Bernhard Kromp
Institute of Meteorology, University of Natural Resources and Applied Life Sciences, Vienna: Herbert Formayer

StartClim2007.D: Consequence of the climate-induced upwards shift of the timberline on the release of greenhouse gases - dynamics of soil organic matter

Federal Forest Office: Robert Jandl, Andreas Schindlbacher,
Sophie Zechmeister-Boltenstern, Michael Pfeffer
Department of Forest and Soil Sciences, University of Natural Resources and Applied Life Sciences, Vienna:
Klaus Katzensteiner
Federal Environment Agency: Sabine Göttlicher
University of Vienna: Hannah Katzensteiner
Tiroler Landesforstdirektion: Dieter Stöhr

StartClim2007.E: Global change and its effect on runoff behaviour of glacierised basins with regard to reservoir power stations

Institute of Meteorology and Geophysics, University Innsbruck:
Michael Kuhn, Marc Olefs, Andrea Fischer

StartClim2007.F: ALSO WIKI – Alpine summer tourism in Austria and the potential effects of climate change

Austrian Institute for Regional Studies and Spatial Planning: Cornelia Krajsits,
Gregori Stanzer, Adolf Anderl, Wolfgang Neugebauer, Iris Wach
Central Institute of Meteorology and Geodynamics
Christine Kroisleitner, Wolfgang Schöner

StartClim2007.G: Integrated modelling of the economy under climate change in application of the STERN report (STERN.AT)

Wegener Centre for Climate and Global Change, University of Graz:
Olivia Koland, Karl Steininger, Andreas Gobiet, Georg Heinrich, Claudia Kettner, Alexandra Pack, Matthias Themeßl, Christoph Töglhofer, Andreas Türk, Thomas Trink
Joanneum Research, Institut für Technologie- und Regionalpolitik:
Raimund Kurzmann
University of Natural Resources and Applied Life Sciences, Vienna: Erwin Schmid

StartClim2008.F: Perception and evaluation of natural hazards as a consequence of glacier retreat and permafrost degradation in tourism destinations—a case study in the Tux Valley (Zillertaler Alps, Austria)

Institute of Landscape Development, Recreation and Conservation Planning, BOKU: Ulrike Pröbstl
University of Regensburg, University Eichstätt-Ingolstadt: Bodo Damm

StartClim2008.G: Adaptation of forest soils to a changing climate

Federal Research and Training Centre for Forests, Natural Hazards and Landscape: Barbara Kitzler, Verena Stingl, Sophie Zechmeister-Boltenstern
Institute of Meteorology and Climate-Research – Atmospheric Environmental Research, Garmisch: Arjan De Bruijn, Ralf Kiese, Klaus Butterbach-Bahl

Subprojects of StartClim2008

StartClim2008.A: Impacts of adaptation measures on the acute mortality risk due to extreme temperature in Vienna

Institute of Environmental Hygiene, Centre for Public Health, MUW: Hanns Moshhammer, Hans-Peter Hutter
Institute of Meteorology, BOKU: Thomas Gerersdorfer

StartClim2008.B: Which adaptations of soil erosion protection measures can be recommended for expected climate change impacts?

Institute of Hydraulics and Rural Water Management, BOKU: Andreas Klik
Institute of Meteorology, BOKU: Josef Eitzinger
Institute of Agronomy and Plant Breeding, BOKU: Peter Liebhard

StartClim2008.C: Practical testing of the monitoring concept “Adaptations of insect pests to climate change in crop production of eastern Austria” by investigating the distribution of current cutworm (*Agrotis segetum*, Schiff.; *Fam. Noctuidae*) damage as a function of site-related and climatic factors

Bio Forschung Austria: Patrick Hann, Claus Trska, Eva Maria Frauenschuh, Bernhard Kromp

StartClim2008.D: Organic agriculture in the mountains of Tyrol—contributions to mitigating climate change and adaptation strategies

Division of Organic Farming, BOKU: Michael Dorninger, Bernhard Freyer

StartClim2008.E: Development and economic valuation of landscape structures to decrease evapotranspiration on agricultural acres with account taken of climate change and biomass production

Institute of Landscape Development, Recreation and Conservation Planning, BOKU: Christiane Brandenburg, Bernhard Ferner, Sonja Völler, Brigitte Alex
Institute of Meteorology, BOKU: Josef Eitzinger, Thomas Gerersdorfer
Division of Organic Farming, BOKU: Bernhard Freyer, Andreas Surböck, Agnes Schweinzer, Markus Heinzinger
Institute of Agricultural and Forestry Economics, BOKU: Enno Bahrs